

# How to apply for an MSc by Research or PhD in Psychology

Dr Nicole Tang

Psychology PGR Admissions Tutor



**WARWICK**  
THE UNIVERSITY OF WARWICK

## Step 1 – minimum academic requirements

- Bachelors/first degree equivalent to a UK 2:1, or
- Masters degree equivalent to a UK Merit
- English language proficiency (Non-English majority countries)
- Visa (International students)

## Step 2 – choose a fitting research domain



Behavioural  
Science



Language &  
Learning



Lifespan Health &  
Wellbeing



## Step 3 – identify potential supervisors

- Read up the work of academics in the research group chosen
- Approach 2 or 3 academics whose interests match with your own
- Email these academics to find one who has the expertise and capacity to supervise
  - Introduce yourself and background
  - Send CV (skills and experience)
  - Outline research topic/questions

## Step 4 – draft a research proposal

- Detailing the research you would like to pursue in more detail.
- 2,000-3,000 words and follow Warwick's [Research Proposal Guidance](#).
- We recommend asking your prospective supervisor for their input!

## Step 5 – submit your application online

- Your research proposal & name of your prospective supervisor (who has agreed to supervise)
- Personal statement & CV
- Details of 2 referees (academic or professional)
- Valid transcripts for your academic qualifications (and certificates if available)
- Apply at: <https://warwick.ac.uk/courseapplication>

## That's it!

- Assuming everything was done as discussed, you should hear back in 3 to 4 weeks.
- Additional documentation may be requested as necessary in order for a decision to be made.



# Funding opportunities



## UK only

- Masters and Doctoral loans
  - Paid out by the UK Government
  - Can be used to cover course fees and living costs
- Masters – worth £11,200 a year in 2020
- Doctoral – worth £6,600 a year (for 4 years) in 2020
- More info: [Student Finance](#)

## UK only

- Department of Psychology Fellowships (PhD only)
  - UK fees and stipend
  - 3 years
  - Can apply with or without an offer already in place
  - More information coming in Spring 2021

## International only

- [Chancellor's International Scholarships \(International & EU\)](#)
  - Tuition fees, stipend, and research grant
  - 3.5 years
  - Deadline: 21<sup>st</sup> January 2021
- [Chinese Scholarship Council Scholarships \(China\)](#)
  - Tuition fees, stipend, and UK/China airfare
  - Deadline: 21<sup>st</sup> January 2021



## All students

- [ESRC DTC studentships](#)

- Home (UK) fees/up to 30% of international (including EU) fees and stipend
- Length: 3 or 3.5 years
- UG/untrained students can apply to the “1+3” scheme – 1-year Social Sciences Master’s, 3-year Psychology PhD
- Deadline: 26<sup>th</sup> January 2021

## More information

- Doctoral College Scholarship and Funding Opportunities:

[https://warwick.ac.uk/services/dc/schols\\_fund/scholarships\\_and\\_funding/](https://warwick.ac.uk/services/dc/schols_fund/scholarships_and_funding/)

- Complete International Scholarships list:

<https://warwick.ac.uk/study/international/admissions/finance/scholarships/>

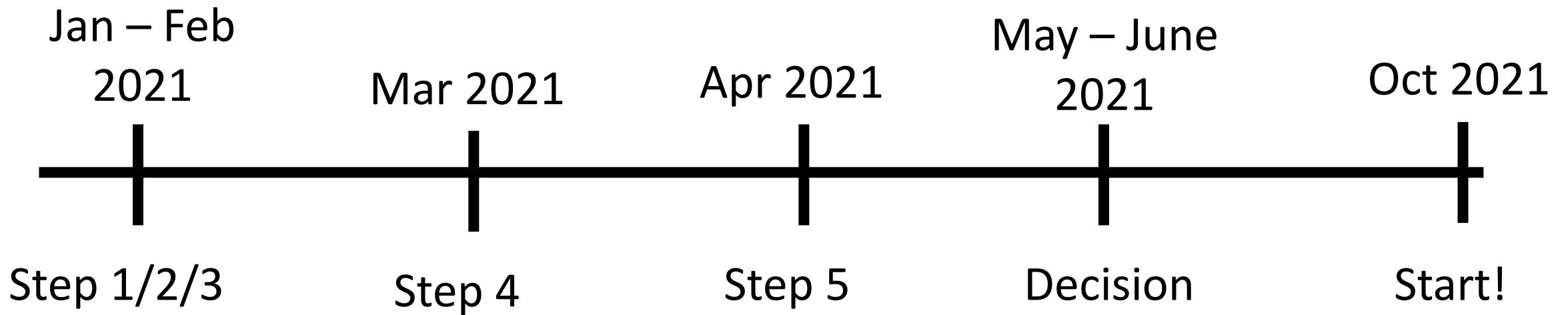
## Frequently asked questions 1

- Does my first degree have to be in Psychology?
  - No, provided it is particularly relevant to your proposed topic of research AND your supervisor has an active interest in the topic
- When can I start?
  - We are looking mostly at applications for an October 2021 start, but welcome applications for an earlier start provided your prospective supervisor agrees



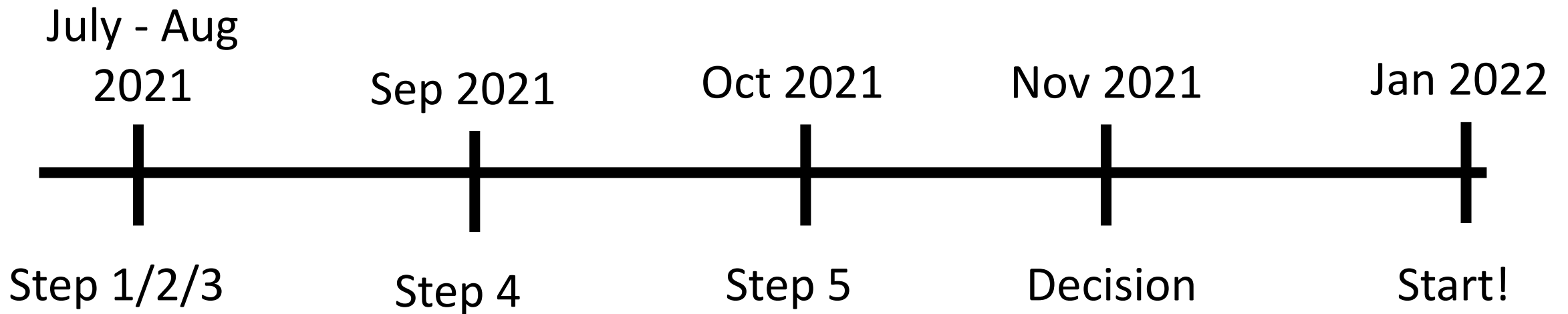


## Timeline - Oct 2021 entry





## Timeline - Jan 2022 entry



## Frequently asked questions 2

- What's the difference between Mphil/PhD and MSc by Research?
  - Length and scope
  - MSc by Research is a PG research degree
  - Students on the full-time MSc by Research are registered for 1 year. Part-time students should expect to be registered for 2 years.
  - Thesis length - 40,000 words max (vs 70,000 words max)
  - Viva - not required unless examiners consider it necessary (vs a requirement)



## Useful contacts

**Postgraduate Office** (Thomas Freeman)

Department of Psychology

University of Warwick

Coventry

CV4 7AL UK

Tel: +44/0 24 765 75527

e-mail: [psychpg-admissions@warwick.ac.uk](mailto:psychpg-admissions@warwick.ac.uk)

<https://warwick.ac.uk/fac/sci/psych/pgresearch/>

**WARWICK**  
THE UNIVERSITY OF WARWICK

