

## Using the World Development Indicators database

This introductory manual is designed to introduce the database package for the World Development Indicators 2003 (WDI), although it is clearly beyond its scope to give a comprehensive guide to all of the data. The database WDI contains a great deal of time series data published by the World Bank across a list of . The WDI now encompasses more than 500 indicators selected from a time series database spanning 40 years for 208 countries. It provides a larger picture of poverty trends and social welfare, the use of environmental resources, the performance of the public sector, and the integration of the global economy. The WDI is the World Bank's premier annual compilation of data about development. The database is loaded on the NT server. After logging onto the PC, from the Novell Application launcher, choose the Information Services directory and then Library CD-Roms and Statistics. From the Statistics Menu choose one the WDI 2003 (New) publication and a screen appear as in Figure 1:

Figure 1: Opening screen for the WDI database



Clicking on World Development Indicators gives a series of World Bank pdf documents regarding these WDIs. The documents are broken down by a series of categories, which are listed below:

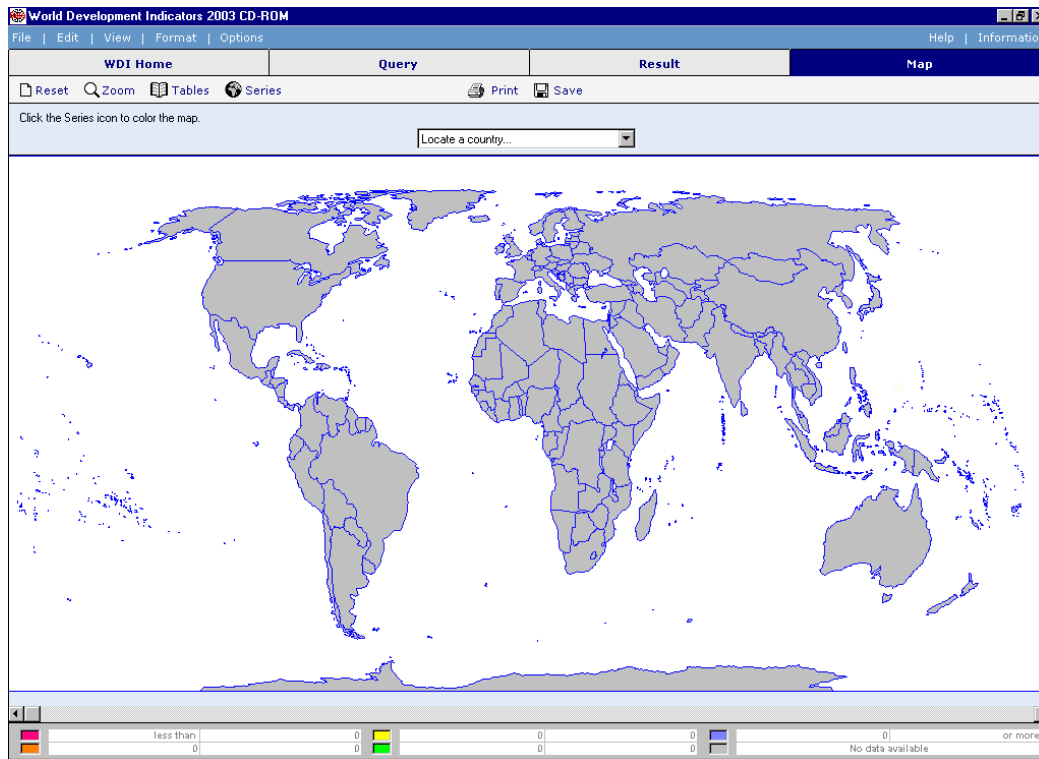
- 1. WORLD VIEW**
- 2. PEOPLE**
- 3. ENVIROMENT**
- 4. ECONOMY**
- 5. STATES AND MARKETS**
- 6. GLOBAL LINKS**

Clicking on World Bank Atlas gives a series of World Bank pdf (and excel data) documents regarding are range of issue. The documents are broken down by a series of categories, which are listed below:

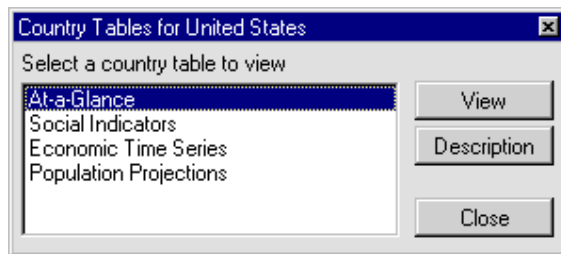
- 1** The world's growing population
- 2** Longer lives
- 3** Rich countries—and poor
- 4** Urban demands on the world's environment
- 5** Many people are still poor
- 6** Millennium Development Goals
- 7** Education opens doors
- 8** Gender and development
- 9** Children under five—struggling to survive
- 10** Improving the health of mothers
- 11** Global killers
- 12** The education vaccine
- 13** Limited land and more mouths to feed
- 14** Forests shrinking
- 15** Energy use and a warmer world
- 16** Growth and opportunity
- 17** The rise of the service economy
- 18** Investment for growth
- 19** Improving the investment and business climate
- 20** Improving the performance of government
- 21** Building sound infrastructure
- 22** Conflict and development
- 23** The integrating world
- 24** Reducing barriers to trade
- 25** Aid for development

If in Figure 1 you choose World Map you get Figure 2, below:

Figure 2: World Map



This is a clickable map of the world – double clicking on any country gives information on the country as in the form below:



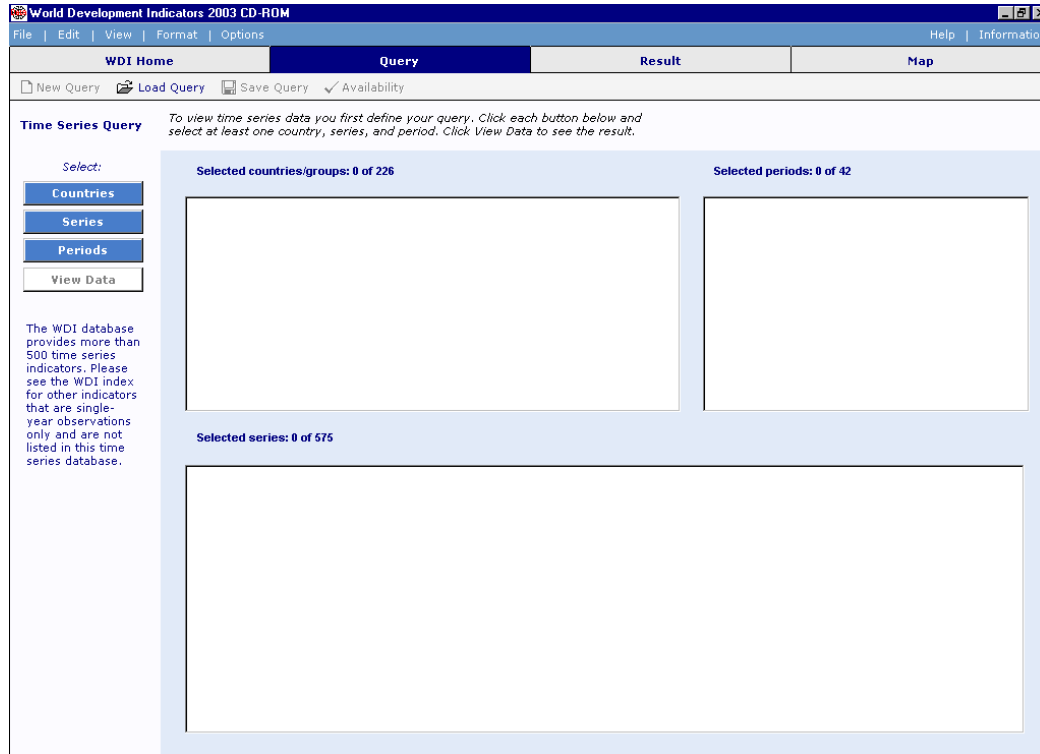
Clicking on Country Tables in Figure 1, gives the list of countries that the World Bank has and these are listed for you in Table 1. The country tables provide some data along with a brief over view of the key economic and social indicators of that country.

Table 1: List of countries covered by the World Bank Database

|             |                 |               |               |             |                 |              |                |               |
|-------------|-----------------|---------------|---------------|-------------|-----------------|--------------|----------------|---------------|
| Afghanistan | Bosnia & Herz   | Cuba          | Ghana         | Kazakhstan  | Mauritania      | Papua New    | South Africa   | Uganda        |
| Albania     | Botswana        | Cyprus        | Greece        | Kenya       | Mauritius       | Paraguay     | Spain          | Ukraine       |
| Algeria     | Brazil          | Czech Rep     | Grenada       | Kiribati    | Mexico          | Peru         | Sri Lanka      | UAE           |
| Angola      | Brunei          | Denmark       | Guatemala     | Korea, Rep. | Micronesia      | Philippines  | St. Kitts      | UK            |
| Antigua+Bar | Bulgaria        | Djibouti      | Guinea        | Kuwait      | Moldova         | Poland       | St. Lucia      | US            |
| Argentina   | Burkina Faso    | Dominica      | Guinea-Bissau | Kyrgyz Rep  | Mongolia        | Portugal     | St. Vincent    | Uruguay       |
| Armenia     | Burundi         | Dominican Rep | Guyana        | Lao PDR     | Morocco         | Puerto Rico  | Sudan          | Uzbekistan    |
| Aruba       | Cambodia        | Ecuador       | Haiti         | Latvia      | Mozambique      | Qatar        | Suriname       | Vanuatu       |
| Australia   | Cameroon        | Egypt         | Honduras      | Lebanon     | Myanmar         | Romania      | Swaziland      | Venezuela, RB |
| Austria     | Canada          | El Salvador   | Hong Kong     | Liberia     | Namibia         | Russian Fed  | Sweden         | Vietnam       |
| Azerbaijan  | Cape Verde      | Equatorial G. | Hungary       | Libya       | Nepal           | Rwanda       | Switzerland    | Virgin Is.    |
| Bahamas     | Central African | Eritrea       | Iceland       | Lithuania   | Netherlands     | Samoa        | Syria          | West Bank     |
| Bahrain     | Chad            | Estonia       | India         | Luxembourg  | Nether. Antille | São Tomé     | Tajikistan     | Yemen, Rep.   |
| Bangladesh  | Chile           | Ethiopia      | Indonesia     | Macao       | New Caledonia   | Saudi Arabia | Tanzania       | Yugoslavia,   |
| Barbados    | China           | Fiji          | Iran          | Macedonia   | New Zealand     | Senegal      | Thailand       | Zambia        |
| Belarus     | Colombia        | Finland       | Iraq          | Madagascar  | Nicaragua       | Seychelles   | Timor-Leste    | Zimbabwe      |
| Belgium     | Comoros         | France        | Ireland       | Malawi      | Niger           | Sierra Leone | Togo           |               |
| Belize      | Congo           | French Poly   | Israel        | Malaysia    | Nigeria         | Singapore    | Tonga          |               |
| Benin       | Congo, Rep.     | Gabon         | Italy         | Maldives    | Norway          | Slovak Rep   | Trinidad + Tob |               |
| Bermuda     | Costa Rica      | Gambia        | Jamaica       | Mali        | Oman            | Slovenia     | Tunisia        |               |
| Bhutan      | Côte d'Ivoire   | Georgia       | Japan         | Malta       | Pakistan        | Solomon Is   | Turkey         |               |
| Bolivia     | Croatia         | Germany       | Jordan        | Marshall Is | Panama          | Somalia      | Turkmenistan   |               |

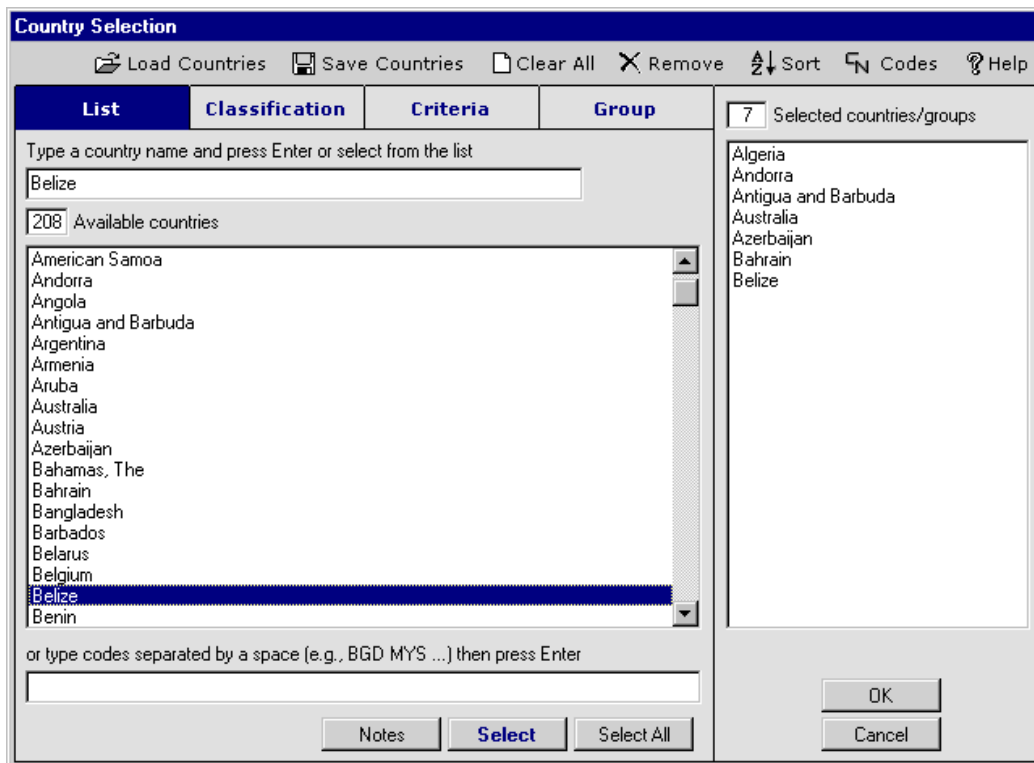
Main part of program is obtained by clicking on Time Series Query in Figure 1. Clicking this link brings you to Figure 3.

Figure 3 Time Series Query



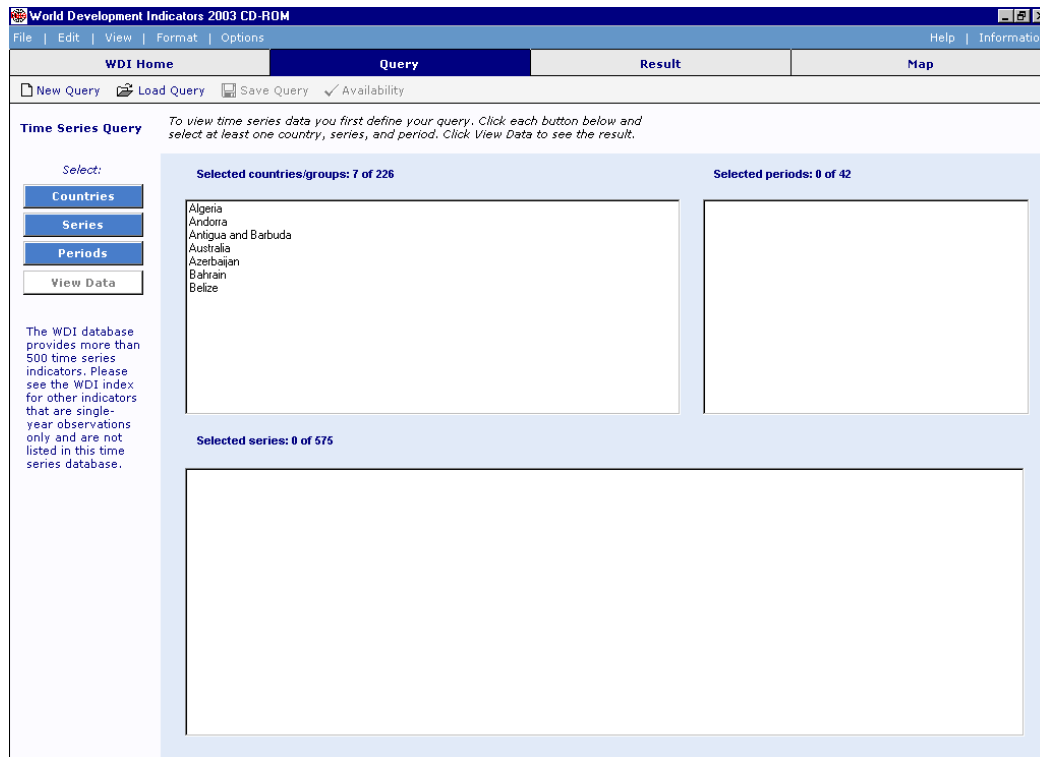
Here you must specify what series you want for which countries and over what time period you would like the data. You must remember that all data is annual. If you click on countries you will be asked to specify those countries for which you would like the data. Clicking on Countries in Figure 3 above, gives you Figure 4.

Figure 4: Country selection screen



On this screen you are told that there is data available for 208 countries and are supplied (in alphabetical order) a list of these countries. To select any country you simply scroll through the list and double click on any country you wish. The specified country will then be put into the right hand side box from Figure 4. You can select as many countries as you like. When you are happy with your list of countries click OK and you will be presented with Figure 5. This is similar to Figure 3, except the list of countries chosen appears in the top left hand box.

Figure 5: Time Series Query with countries selected



Selecting Series from Figure 5, gives Figure 6. This provides a list of all those series (575 series in total) that are potentially available for each country – the list should be identical for each country. Please note that for many countries (especially new countries or less developed countries) the coverage of data availability will be poor. Either there will be no information at all or the data will not be available annually, but perhaps only once every three or five years, for example.

Going through the list you simply click on those series that you are interested in, those series that you select will be listed in the lower of the two boxes from Figure 6. In Figure 6, I have selected 8 series. Clicking on OK takes you to Figure 7.

Figure 6: List of Series

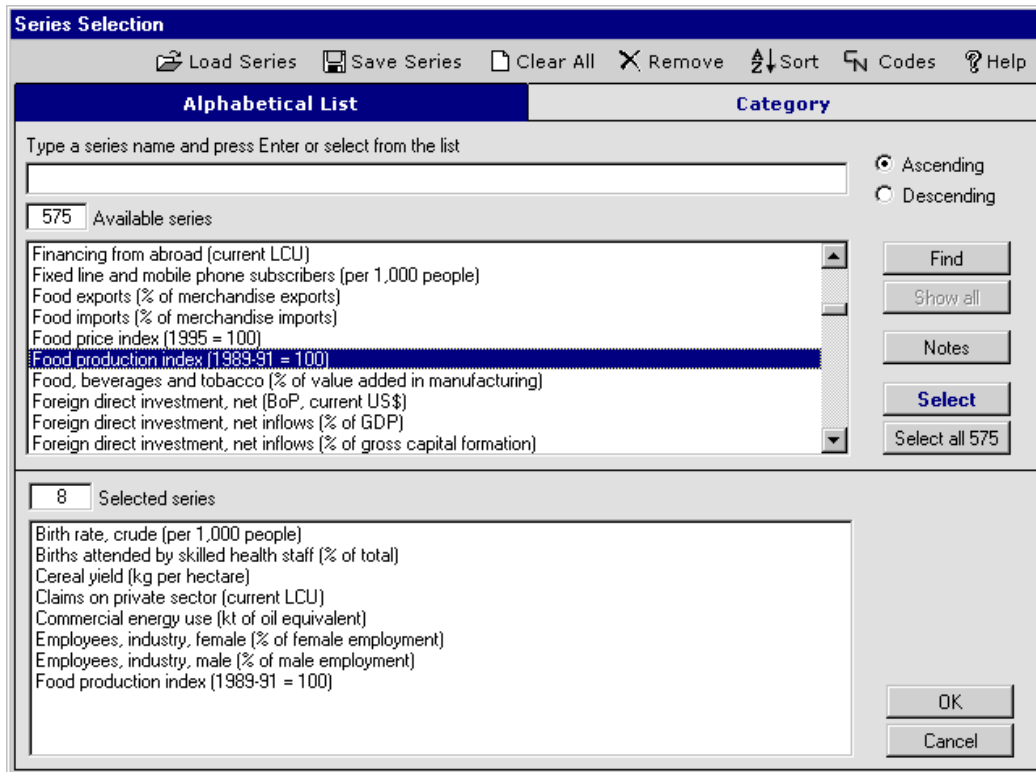
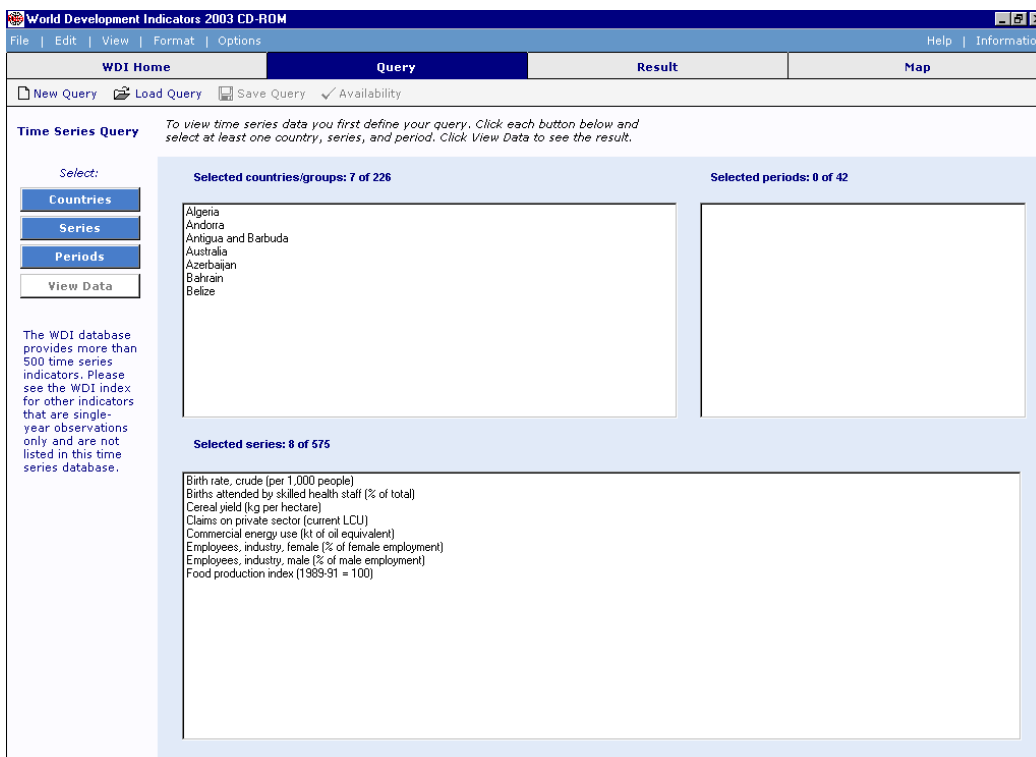


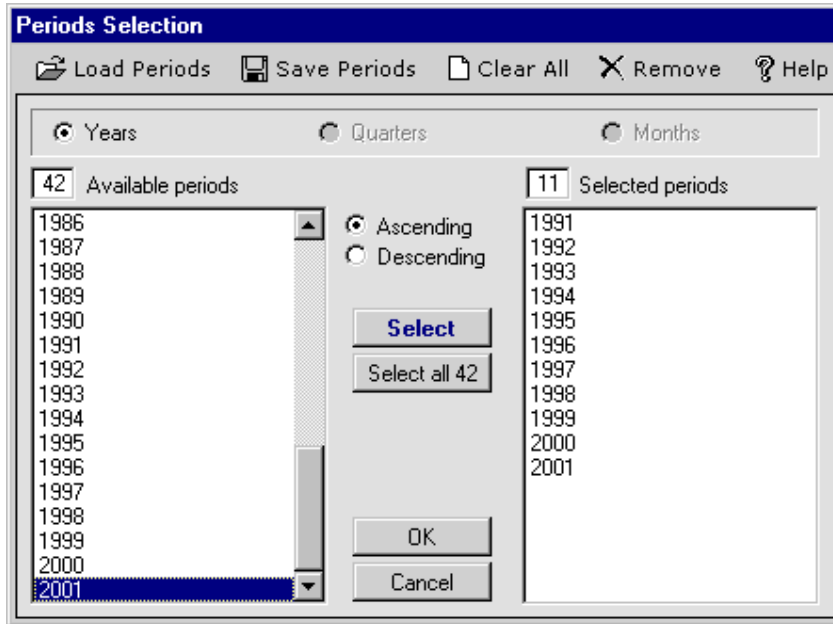
Figure 7: Time Series Query with countries and series selected





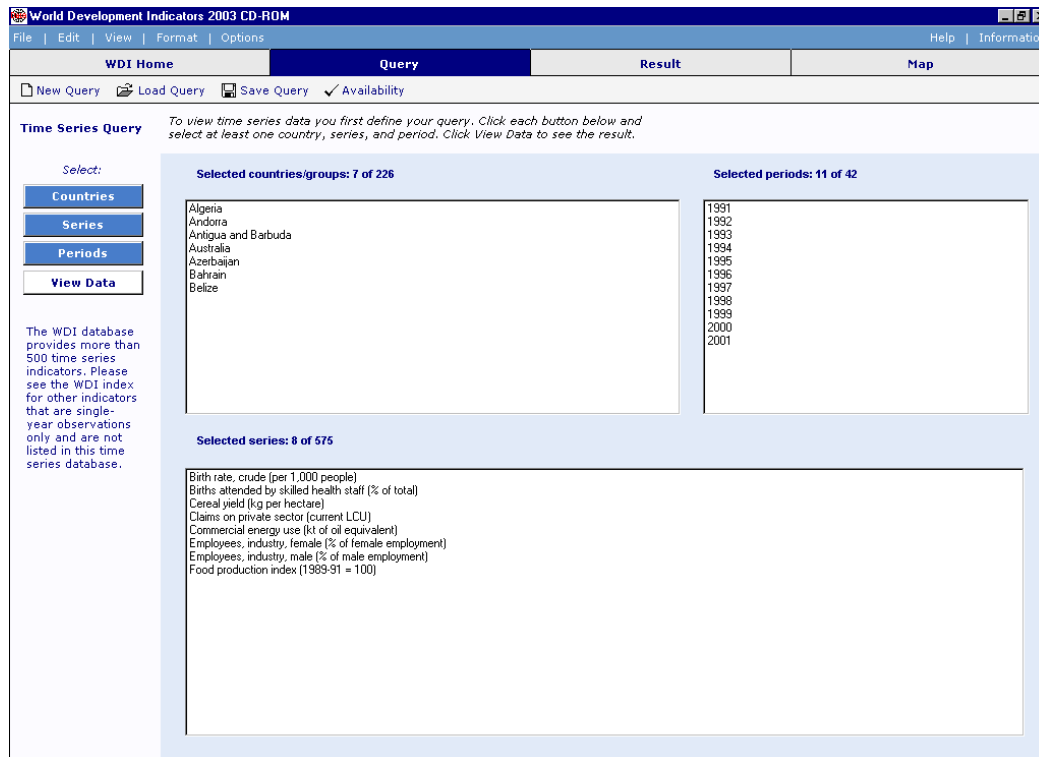
In Figure 7 you are supplied with the list of countries and the series that you have selected for each of those countries. Now clicking on Periods in Figure 7, presents you with the list of potential dates over which this data might be available. This years are presented in Descending order. Clicking on Ascending will give you a list of dates as in Figure 8 below.

Figure 8: Time periods



You must now go through and select individual years, unless you want all 42 years available. Above I have selected all years from 1991 through to 2001. Clicking OK gets us to Figure 9, which is now completed as I have specified the series, the countries and the years over which I want the data.

Figure 9: Time Series Query with countries and series and times periods selected



Selecting View Data then takes you to Figure 10, which resembles an excel spreadsheet for your data. The data is organised by variable, with a separate sheet for each variable. Then the countries are presents in each row and the years across the columns (see Figure 10 below). Figure 10 gives a good indication of how sparse the data might be for some countries, Andorra and Antigua have no information on the Birth Rate (per 100,000 people), Bahrain and Belize have data only once every three years and only Australia and Azerbaijan has all observations.

From Figure 10 clicking on Save gives Figure 11, in which you specify the type of file in which you wish to save the data. Excel is clearly the best form as it is easy to then take the data into PcGive once you have rearranged it into an appropriate form – in which the different variables are in different columns of the same sheet and the different countries (or different years) are in the different rows. Clicking on Excel yields Figure 12, which simply requires you to supply a file name for your data.

Figure 10: Data for Birth Rate

World Development Indicators 2003 CD-ROM

File | Edit | View | Format | Options Help | Information

WDI Home Query Result Map

Print Save Cut Copy Paste Freeze Codes Chart Map

Orientation: Countries down/Periods across Scientific 0 Raw data

Birth rate, crude (per 1,000 people) Up Dn Notes

|                   | A          | B          | C          | D          | E          | F          | G          | H          | I          | J          | K          | L | M | N |
|-------------------|------------|------------|------------|------------|------------|------------|------------|------------|------------|------------|------------|---|---|---|
|                   | 1991       | 1992       | 1993       | 1994       | 1995       | 1996       | 1997       | 1998       | 1999       | 2000       | 2001       |   |   |   |
| 1 Birth rate, cru |            |            |            |            |            |            |            |            |            |            |            |   |   |   |
| 2 Algeria         |            | 28.200E+00 |            |            | 27.180E+00 |            | 26.500E+00 |            |            | 23.680E+00 | 22.740E+00 |   |   |   |
| 3 Andorra         |            |            |            |            |            |            |            |            |            |            |            |   |   |   |
| 4 Antigua and B   |            |            |            |            |            |            |            |            |            |            |            |   |   |   |
| 5 Australia       | 14.800E+00 | 15.100E+00 | 14.700E+00 | 14.500E+00 | 14.100E+00 | 13.900E+00 | 13.700E+00 | 13.300E+00 | 13.000E+00 | 13.000E+00 | 12.600E+00 |   |   |   |
| 6 Azerbaijan      | 27.000E+00 | 25.200E+00 | 24.200E+00 | 21.400E+00 | 19.100E+00 | 17.100E+00 | 17.400E+00 | 15.700E+00 | 14.700E+00 | 15.230E+00 | 15.770E+00 |   |   |   |
| 7 Bahrain         |            | 23.900E+00 |            |            | 23.900E+00 |            | 23.900E+00 | 20.300E+00 | 19.800E+00 | 20.130E+00 | 20.470E+00 |   |   |   |
| 8 Belize          |            | 33.100E+00 |            |            | 30.340E+00 |            | 28.500E+00 |            |            | 26.520E+00 | 25.860E+00 |   |   |   |
| 9                 |            |            |            |            |            |            |            |            |            |            |            |   |   |   |
| 10                |            |            |            |            |            |            |            |            |            |            |            |   |   |   |
| 11                |            |            |            |            |            |            |            |            |            |            |            |   |   |   |
| 12                |            |            |            |            |            |            |            |            |            |            |            |   |   |   |
| 13                |            |            |            |            |            |            |            |            |            |            |            |   |   |   |
| 14                |            |            |            |            |            |            |            |            |            |            |            |   |   |   |
| 15                |            |            |            |            |            |            |            |            |            |            |            |   |   |   |
| 16                |            |            |            |            |            |            |            |            |            |            |            |   |   |   |
| 17                |            |            |            |            |            |            |            |            |            |            |            |   |   |   |
| 18                |            |            |            |            |            |            |            |            |            |            |            |   |   |   |
| 19                |            |            |            |            |            |            |            |            |            |            |            |   |   |   |
| 20                |            |            |            |            |            |            |            |            |            |            |            |   |   |   |
| 21                |            |            |            |            |            |            |            |            |            |            |            |   |   |   |
| 22                |            |            |            |            |            |            |            |            |            |            |            |   |   |   |
| 23                |            |            |            |            |            |            |            |            |            |            |            |   |   |   |
| 24                |            |            |            |            |            |            |            |            |            |            |            |   |   |   |
| 25                |            |            |            |            |            |            |            |            |            |            |            |   |   |   |
| 26                |            |            |            |            |            |            |            |            |            |            |            |   |   |   |
| 27                |            |            |            |            |            |            |            |            |            |            |            |   |   |   |
| 28                |            |            |            |            |            |            |            |            |            |            |            |   |   |   |
| 29                |            |            |            |            |            |            |            |            |            |            |            |   |   |   |
| 30                |            |            |            |            |            |            |            |            |            |            |            |   |   |   |
| 31                |            |            |            |            |            |            |            |            |            |            |            |   |   |   |
| 32                |            |            |            |            |            |            |            |            |            |            |            |   |   |   |
| 33                |            |            |            |            |            |            |            |            |            |            |            |   |   |   |
| 34                |            |            |            |            |            |            |            |            |            |            |            |   |   |   |

Figure 11: Data exporting

Data Translator Utility

Microsoft ASCII SAS MS ACCESS dBASE TEXT

Export:
 

- Entire data set
- Data on this sheet only

Export:
 

- Both codes & names
- Codes only
- Names only

Include 3rd dimension as:
 

- Part of record
- Block header

Suppress blank records

Not Available preference: ..

Fast Export (maintains alphabetical order of indicators and countries in export file)

ASCII file format:
 

- Delimited
- Fixed field

 Text field delimiter: "
   
Field separator: ,
   
Number of decimal places: Default

Scaling format:
 

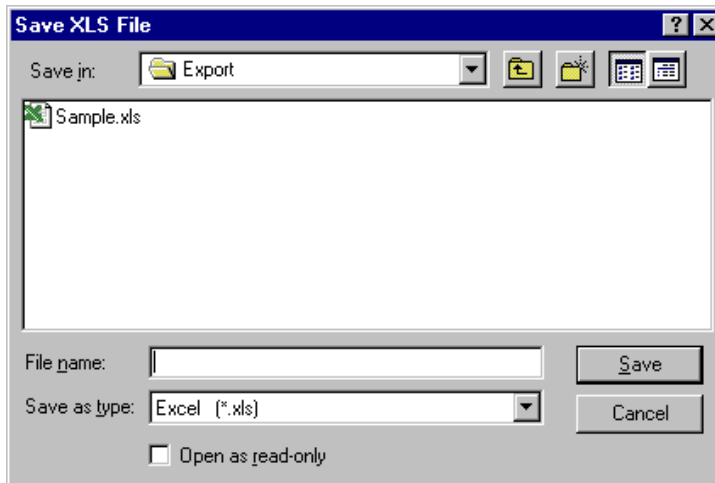
- Natural units
- Scaled units

Text:
 

- Definition
- Source
- Footnotes

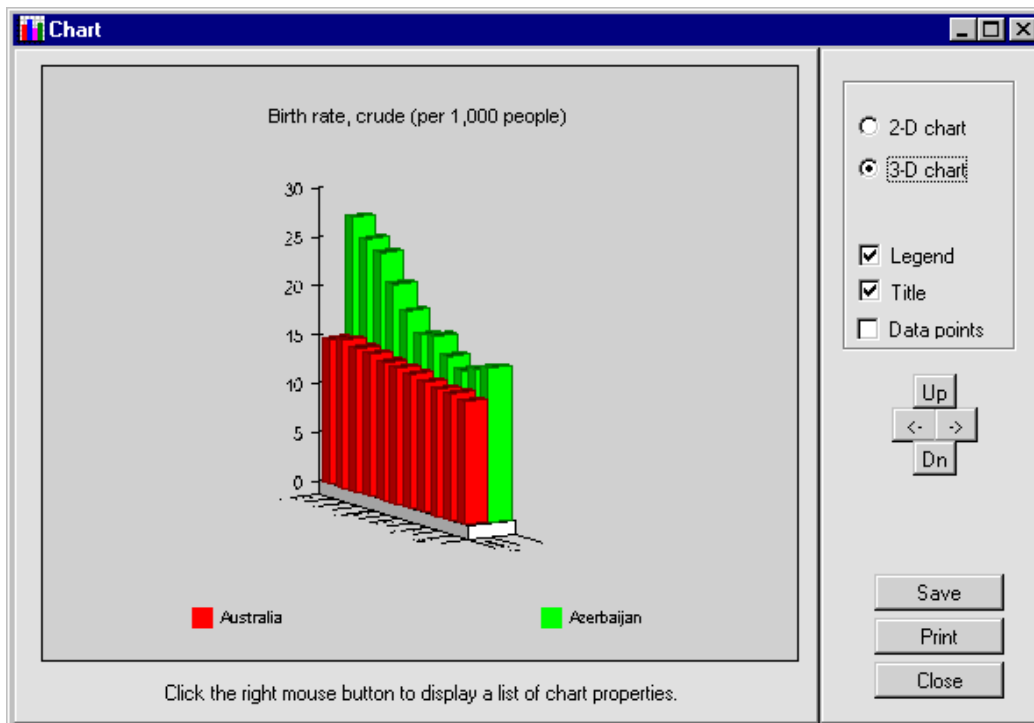
OK Cancel

Figure 12: Data file name



In Figure 10 selecting Chart enables you to plot different series. In Figure 11 we plot the birth rate (per 1,000) for each of Australia and Azerbaijan over the period 1991-2001 – this is a 3-D plot. In general, you would be better off plotting the data in excel, which is a lot more flexible in its plotting functions.

Figure 12: Charts



When you have looked at your plots, clicking on Close will take you back to Figure 10. To exit from Figure 10, click File and Exit.