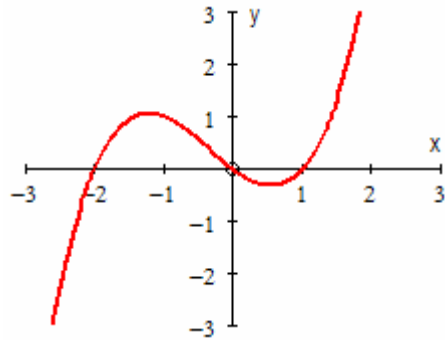


# Algebra

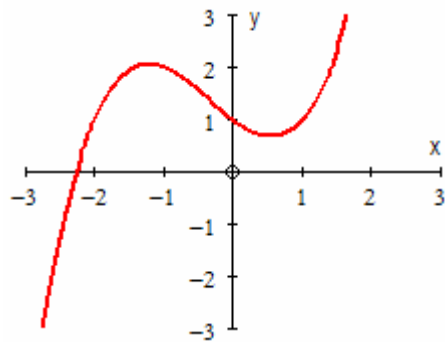
## Section 9: Graphs and transformations

### Multiple Choice Test

Questions 1 to 4 are about the graph of  $y = f(x)$ , shown below.



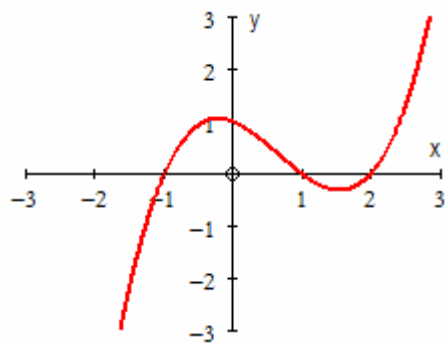
1) The graph below is a transformation of the graph of  $y = f(x)$ .



The equation of this graph is given by

- (a)  $y = f(x) + 1$
- (b)  $y = f(x + 1)$
- (c)  $y = f(x) - 1$
- (d)  $y = f(x - 1)$
- (e) I don't know

2) The graph below is a transformation of the graph of  $y = f(x)$ .



The equation of this graph is given by

- (a)  $y = f(x) - 1$
- (b)  $y = f(x - 1)$
- (c)  $y = f(x + 1)$
- (d)  $y = f(x) + 1$
- (e) I don't know



