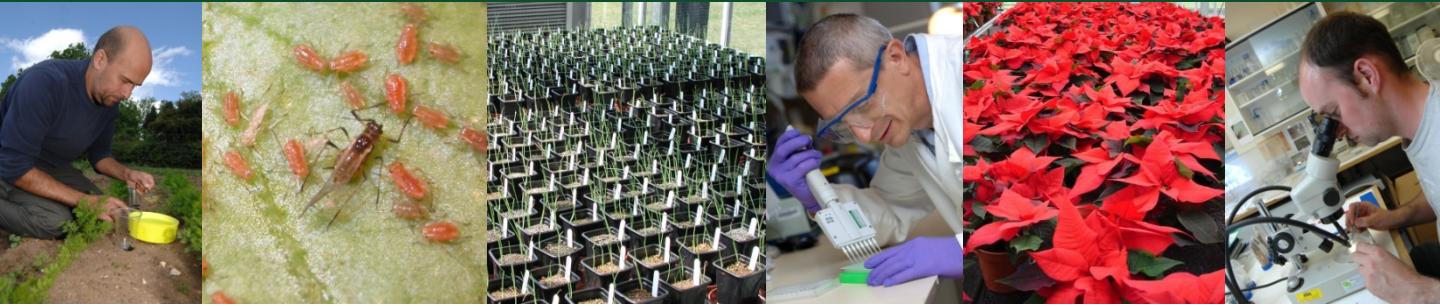


# Warwick Crop Centre



- Research and development for the agricultural industry
- Expertise in crop production, crop protection, crop improvement
- Facilities for laboratory, field and glasshouse trials on horticultural and arable crops including GEP trials
- Genetic Resources Unit maintaining collections of vegetable crops including *Brassica*, *Allium*, carrot, lettuce
- Postgraduate training (MSc by research, PhD, CPD)

For further information please contact us

Email: [cropcentre@warwick.ac.uk](mailto:cropcentre@warwick.ac.uk)

Tel: +44 (0) 24 7657 5270

THE UNIVERSITY OF  
**WARWICK**



[www.warwick.ac.uk/go/wcc](http://www.warwick.ac.uk/go/wcc)