

*Christoph Englert*

---

# Three avenues for Higgs phenomenology

---

*Particle Physics Seminar*

*Warwick*

*17/01/2019*

---

# Overview

---

- ▶ *Improving the expected: SM-like Higgs couplings*
  - ▶ lifting degeneracies in coupling space for expected uncertainties with adversarial machine learning
  - ▶ .....

---

# Overview

---

- ▶ *Improving the expected: SM-like Higgs couplings*
  - ▶ lifting degeneracies in coupling space for expected uncertainties with adversarial machine learning
  - ▶ .....
- ▶ *Constraining/observing the unexpected:*
  - ▶ Higgs sector CP violation
  - ▶ .....

---

# Overview

---

- ▶ *Improving the expected: SM-like Higgs couplings*
  - ▶ lifting degeneracies in coupling space for expected uncertainties with adversarial machine learning
  - ▶ .....
- ▶ *Constraining/observing the unexpected:*
  - ▶ Higgs sector CP violation
  - ▶ .....
- ▶ *Closing in on new physics in the Higgs sector*
  - ▶ *di-Higgs production as a probe of new physics*
  - ▶ .....

# “Yang-Mills theories had to be right”

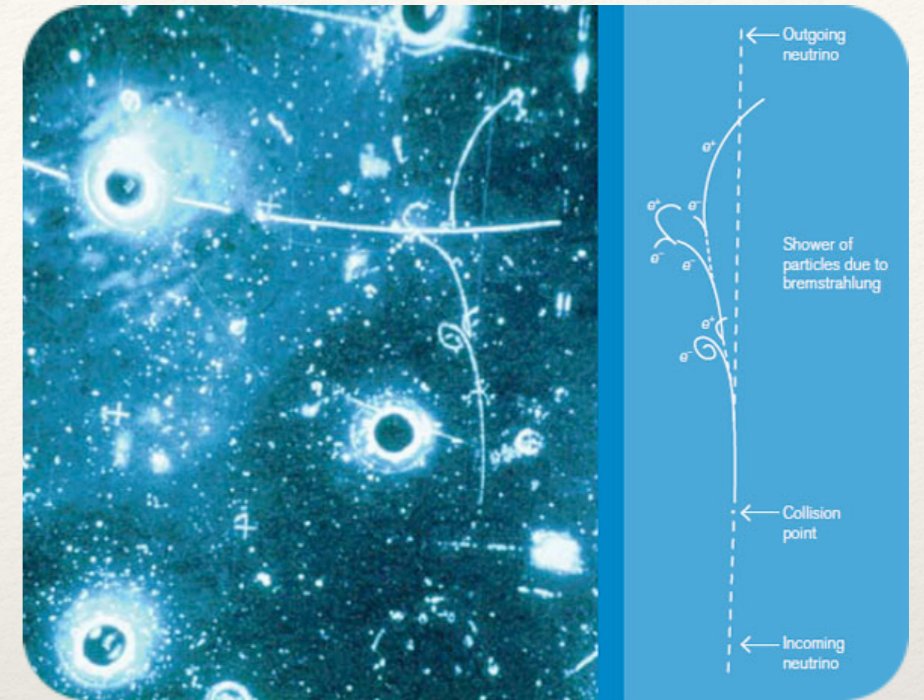
't Hooft, “Under the Spell of the Gauge Principle”

Ws and Zs in 1983 at UA1/UA2

$$m_W \simeq 80.42 \text{ GeV}$$

$$m_Z \simeq 91.19 \text{ GeV}$$

**How do you accommodate this in QFT?**



# “Yang-Mills theories had to be right”

't Hooft, “Under the Spell of the Gauge Principle”

Ws and Zs in 1983 at UA1/UA2

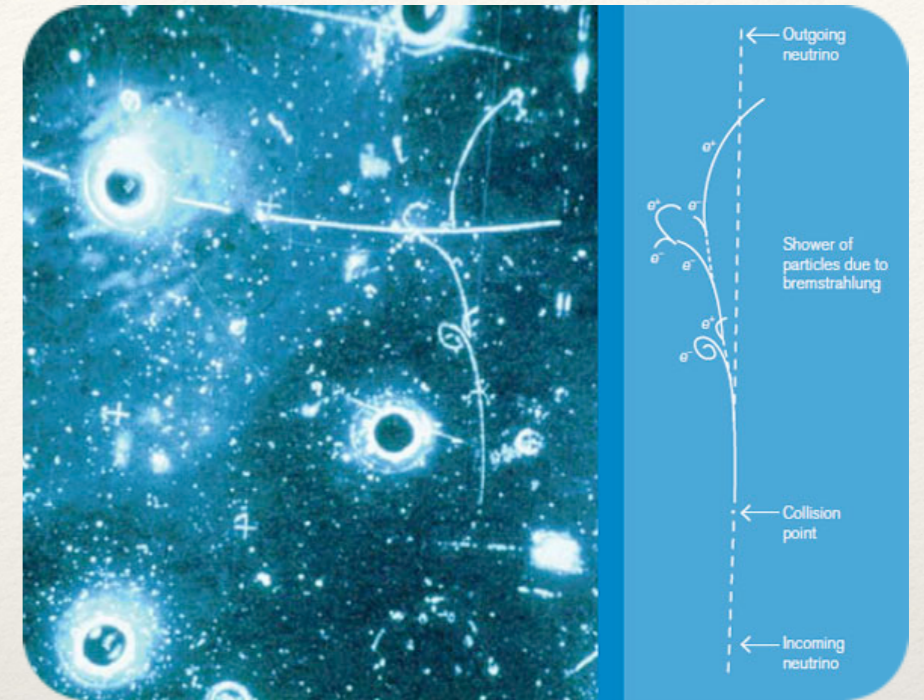
$$m_W \simeq 80.42 \text{ GeV}$$

$$m_Z \simeq 91.19 \text{ GeV}$$

**How do you accommodate this in QFT?**

unique answer to this in 1964

[Higgs '64] [Brout, Englert '64] [Guralnik, Hagen, Kibble '64]



# “Yang-Mills theories had to be right”

't Hooft, “Under the Spell of the Gauge Principle”

Ws and Zs in 1983 at UA1/UA2

$$m_W \simeq 80.42 \text{ GeV}$$

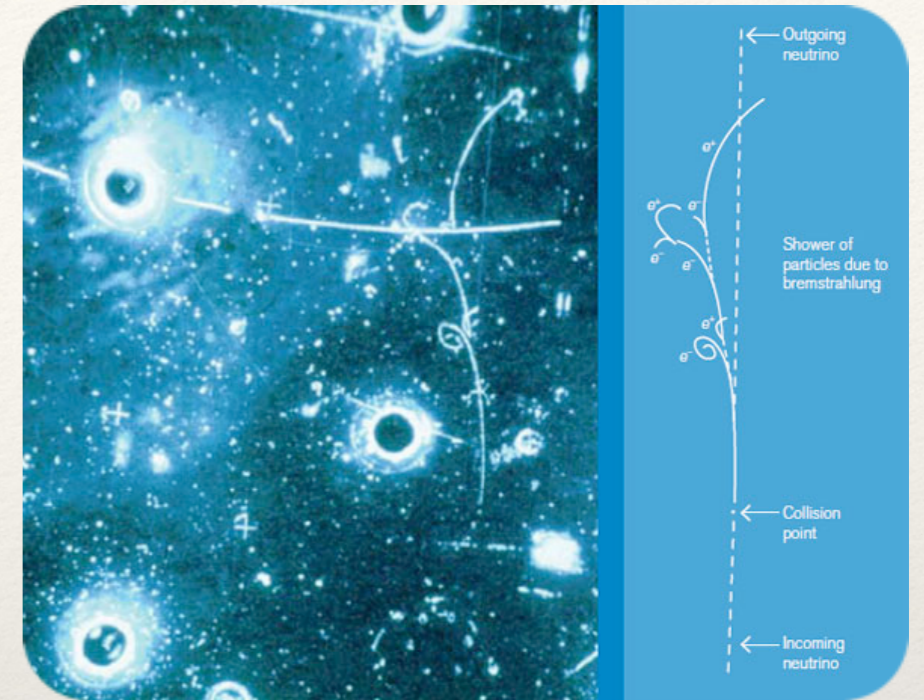
$$m_Z \simeq 91.19 \text{ GeV}$$

**How do you accommodate this in QFT?**

unique answer to this in 1964

[Higgs '64] [Brout, Englert '64] [Guralnik, Hagen, Kibble '64]

- non-linear realisation of gauge symmetry in a Yang Mills+scalar sector is compatible with  $\langle H \rangle \neq 0$   
    ➡ “spontaneous” symmetry breaking



# “Yang-Mills theories had to be right”

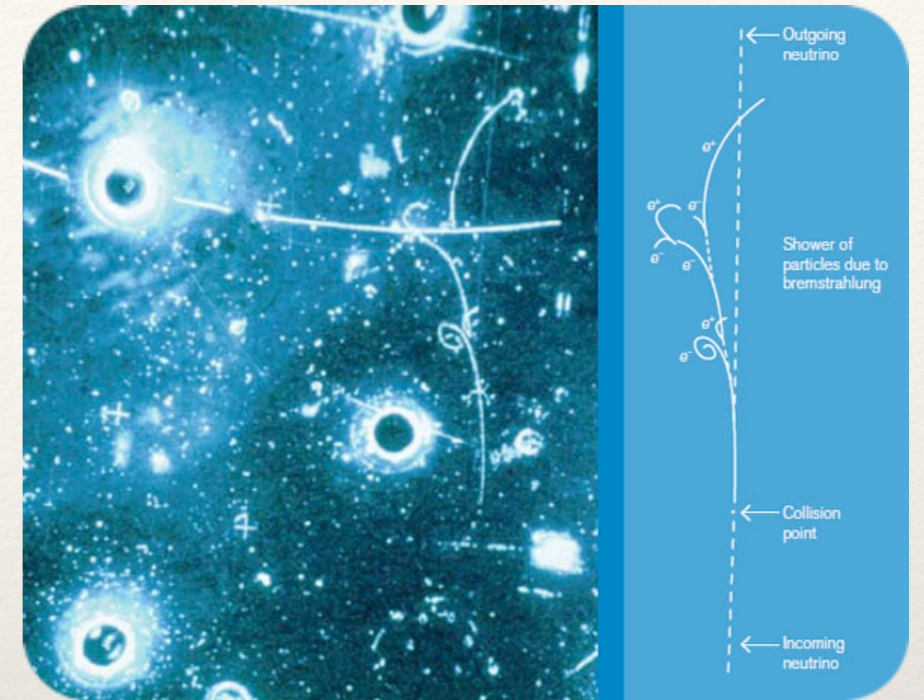
't Hooft, “Under the Spell of the Gauge Principle”

Ws and Zs in 1983 at UA1/UA2

$$m_W \simeq 80.42 \text{ GeV}$$

$$m_Z \simeq 91.19 \text{ GeV}$$

**How do you accommodate this in QFT?**



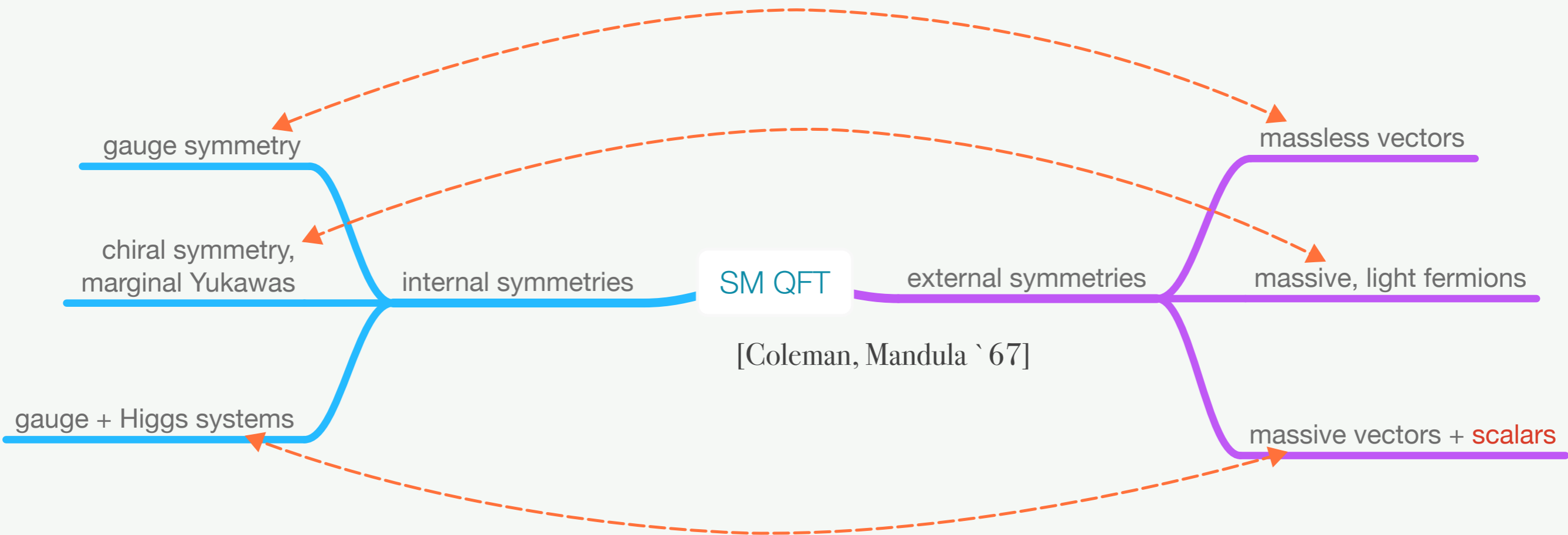
unique answer to this in 1964

[Higgs '64] [Brout, Englert '64] [Guralnik, Hagen, Kibble '64]

- non-linear realisation of gauge symmetry in a Yang Mills+scalar sector is compatible with  $\langle H \rangle \neq 0$ 
  - ➡ “spontaneous” symmetry breaking
- massive gauge bosons, but no ghost problems at small distances
  - ➡ renormalizability, probability conservation

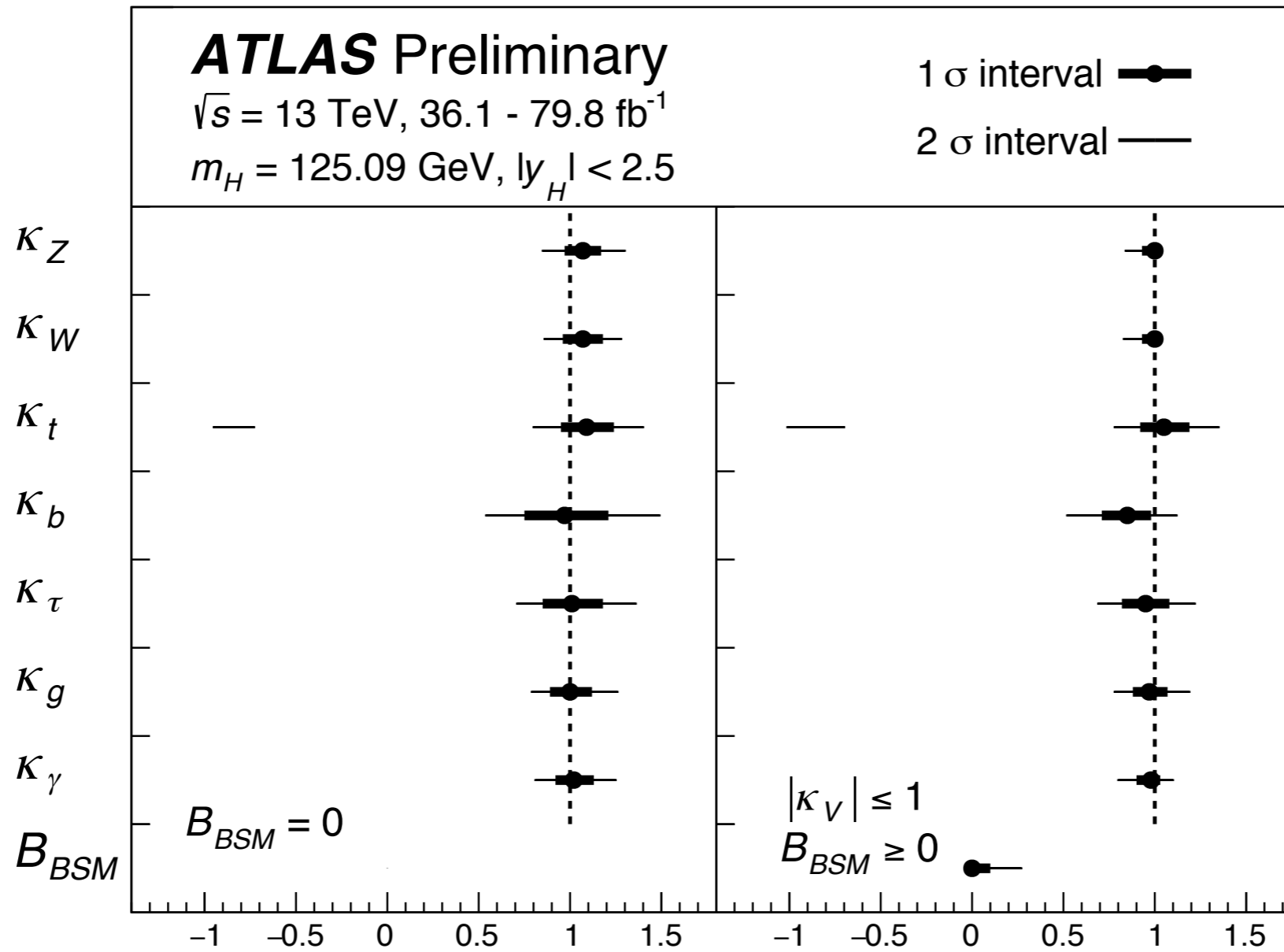


# The Standard Model: taking stock



“What’s next at the LHC ?”

# Status of LHC measurements



[ATLAS '18]

- ➔ everything is consistent with the SM Higgs hypothesis (so far)  
but what are the implications for new physics?

# Fingerprinting the lack of new physics

the SM is flawed

no evidence for  
exotics

coupling/scale  
separated BSM physics

## Effective Field Theory

$$\mathcal{L} = \mathcal{L}_{\text{SM}} + \sum_i \frac{c_i}{\Lambda^2} \mathcal{O}_i + \dots$$

[Buchmüller, Wyler `87]

[Hagiwara, Peccei, Zeppenfeld, Hikasa `87]

[Giudice, Grojean, Pomarol, Rattazzi `07]

[Grzadkowski, Iskrzynski, Misiak, Rosiek `10]

59 B-conserving operators  $\otimes$  flavor  $\otimes$  h.c., d=6  
2499 parameters (reduces to 76 with  $N_f=1$ )

# Fingerprinting the lack of new physics

the SM is flawed

no evidence for  
exotics

coupling/scale  
separated BSM physics

## Effective Field Theory

$$\mathcal{L} = \mathcal{L}_{\text{SM}} + \sum_i \frac{c_i}{\Lambda^2} \mathcal{O}_i + \dots$$

[Buchmüller, Wyler `87]

[Hagiwara, Peccei, Zeppenfeld, Hikasa `87]

[Giudice, Grojean, Pomarol, Rattazzi `07]

[Grzadkowski, Iskrzynski, Misiak, Rosiek `10]

59 B-conserving operators  $\otimes$  flavor  $\otimes$  h.c., d=6  
2499 parameters (reduces to 76 with  $N_f=1$ )

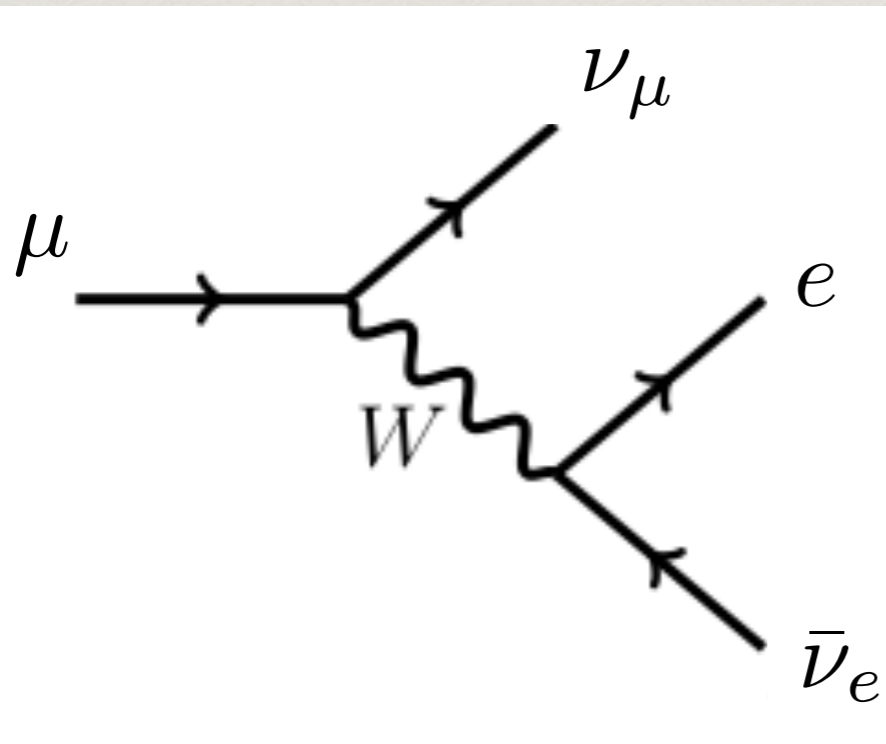
## concrete models

- extended SMEFT
- ( $\mathbb{C}$ ) Higgs portals
- 2HDMs
- (N)MSSM
- compositeness....





## Weak decay



data

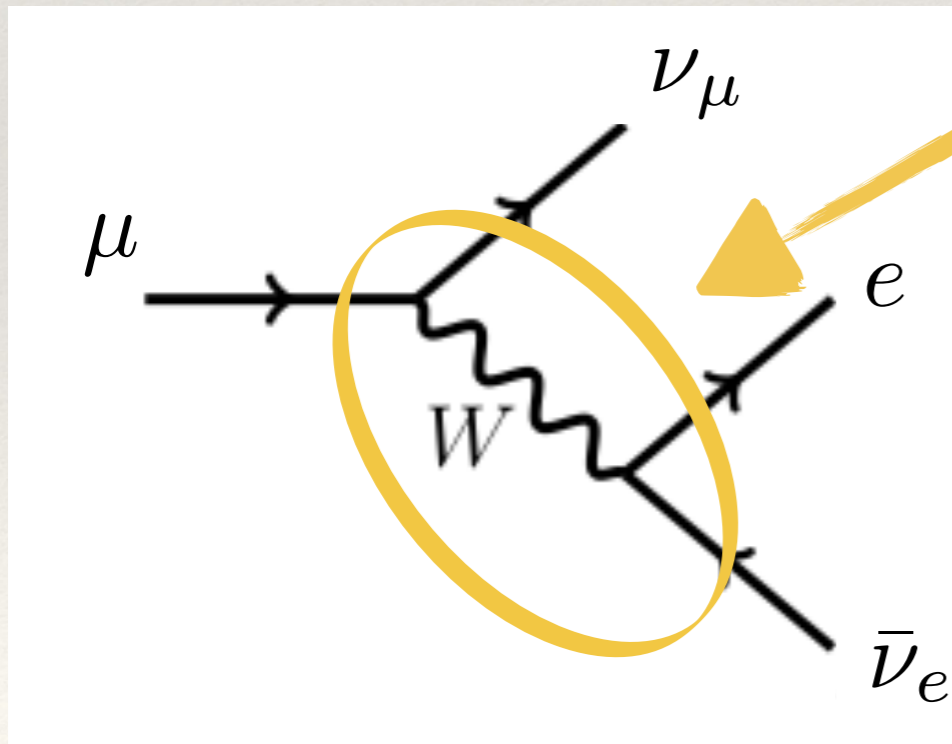
effective field theory

interpretation

Weak decay

$$\frac{1}{t - m_W^2} = \frac{1}{m_W^2} - \frac{t}{m_W^4} + \dots$$

*Note:  $m_\mu^2 \sim |t| \ll m_W^2$*



data

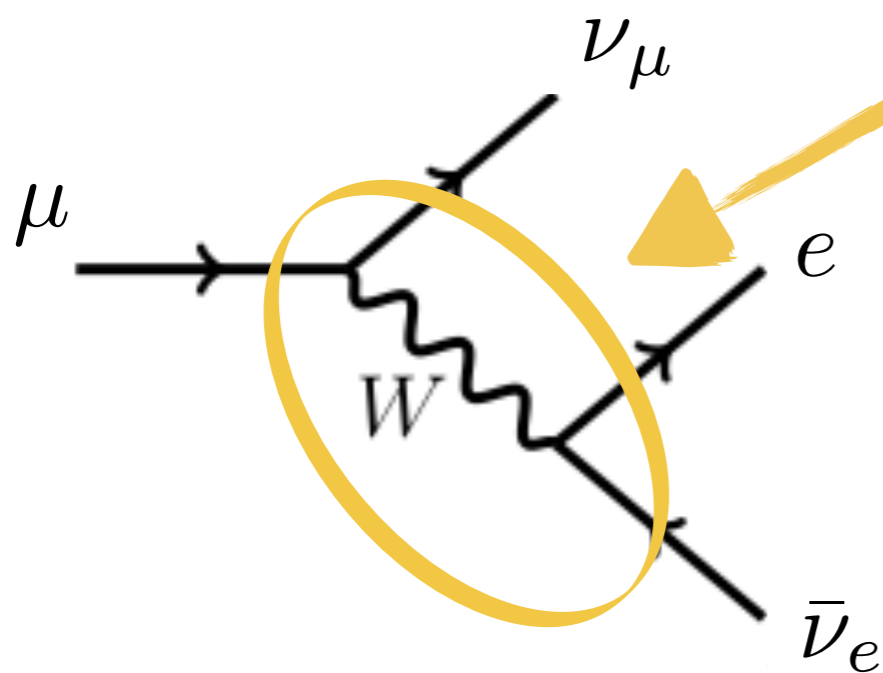
effective field theory

interpretation

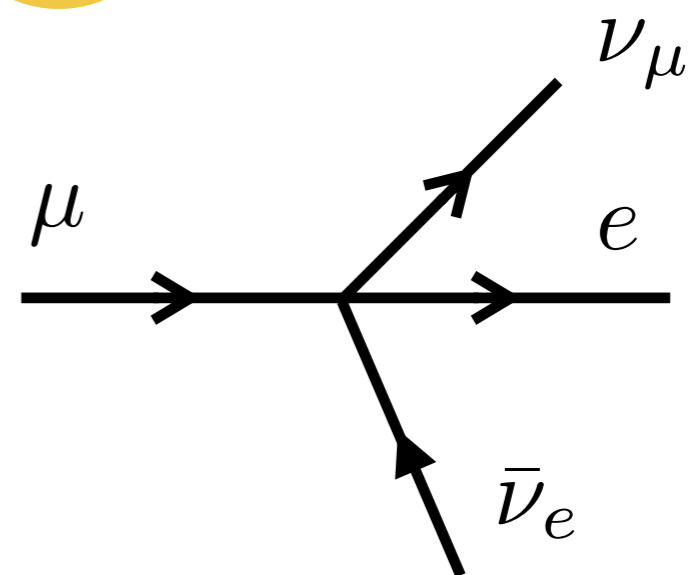
Weak decay

$$\frac{1}{t - m_W^2} = -\frac{1}{m_W^2} - \frac{t}{m_W^4} + \dots$$

$m_\mu^2 \sim |t| \ll m_W^2$



$$\approx -\frac{1}{m_W^2} \times$$



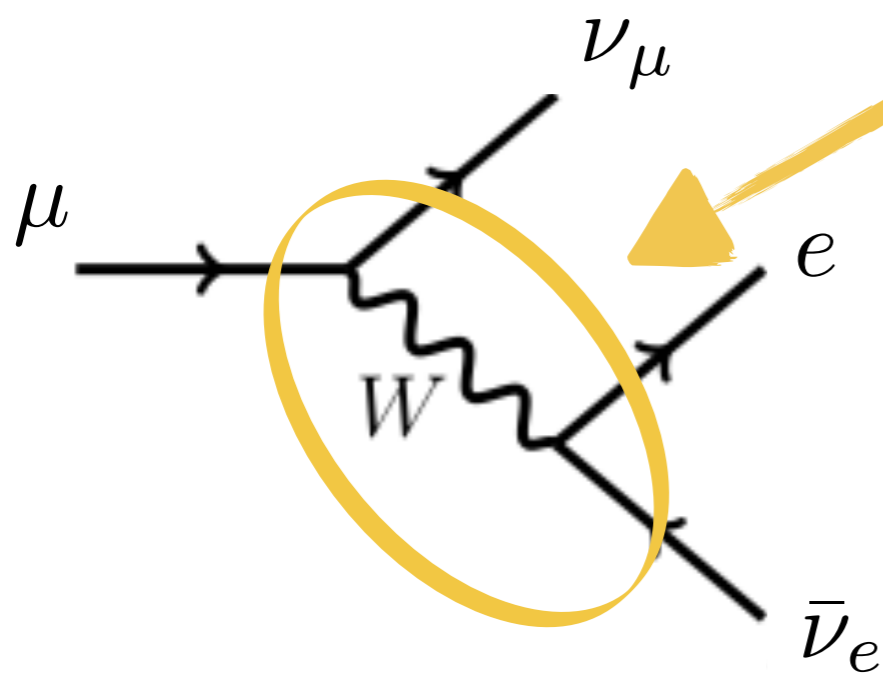




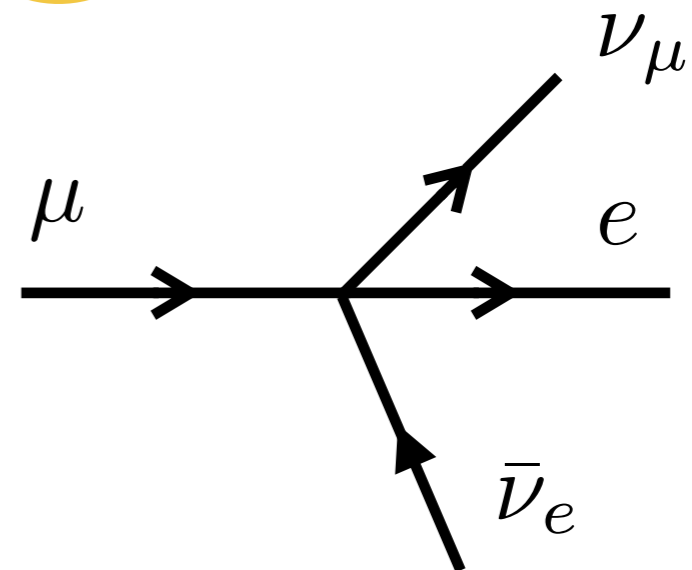
**Weak decay**

$$\frac{1}{t - m_W^2} = \frac{1}{m_W^2} - \frac{t}{m_W^4} + \dots$$

$m_\mu^2 \sim |t| \ll m_W^2$



$$\sim -\frac{1}{m_W^2} \times$$

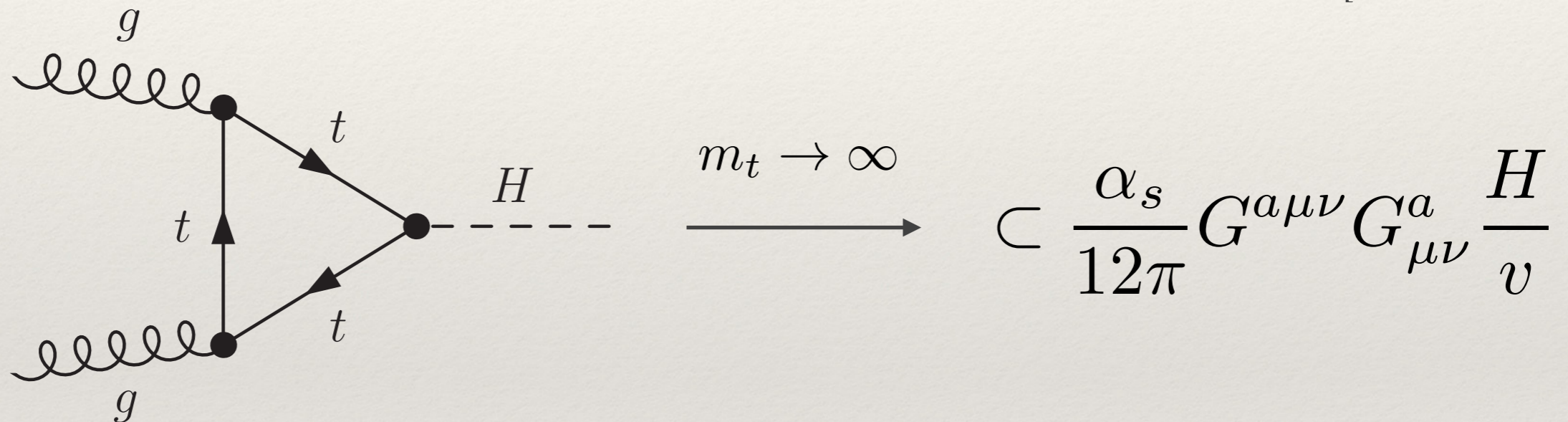


**effective theory below  $m_W$**

# SM-like couplings

- ▶ large number of unconstrained EFT parameters lead to phenomenological degeneracies = “blind directions”
- ▶ one of the most prominent and relevant for Higgs physics

[Ellis et al. `76]  
[Vainstein et al. `70]



contact ggH interactions mask top Yukawa measurements

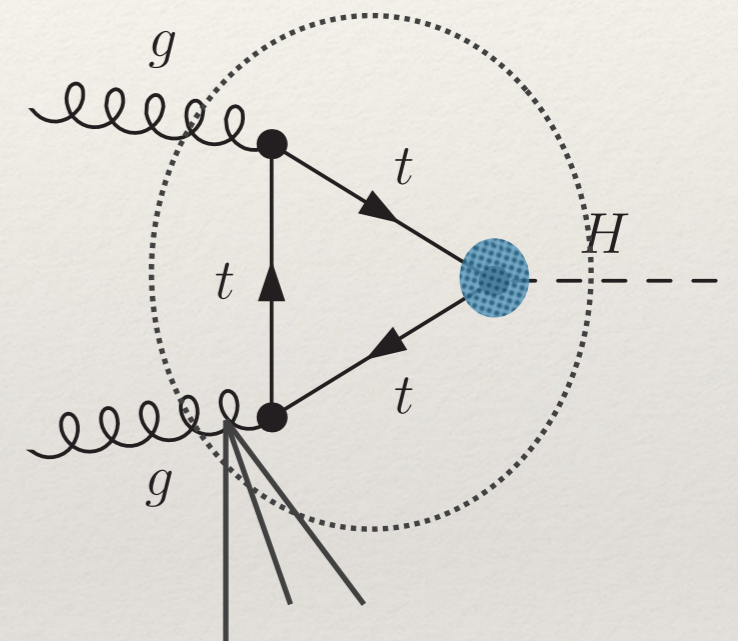
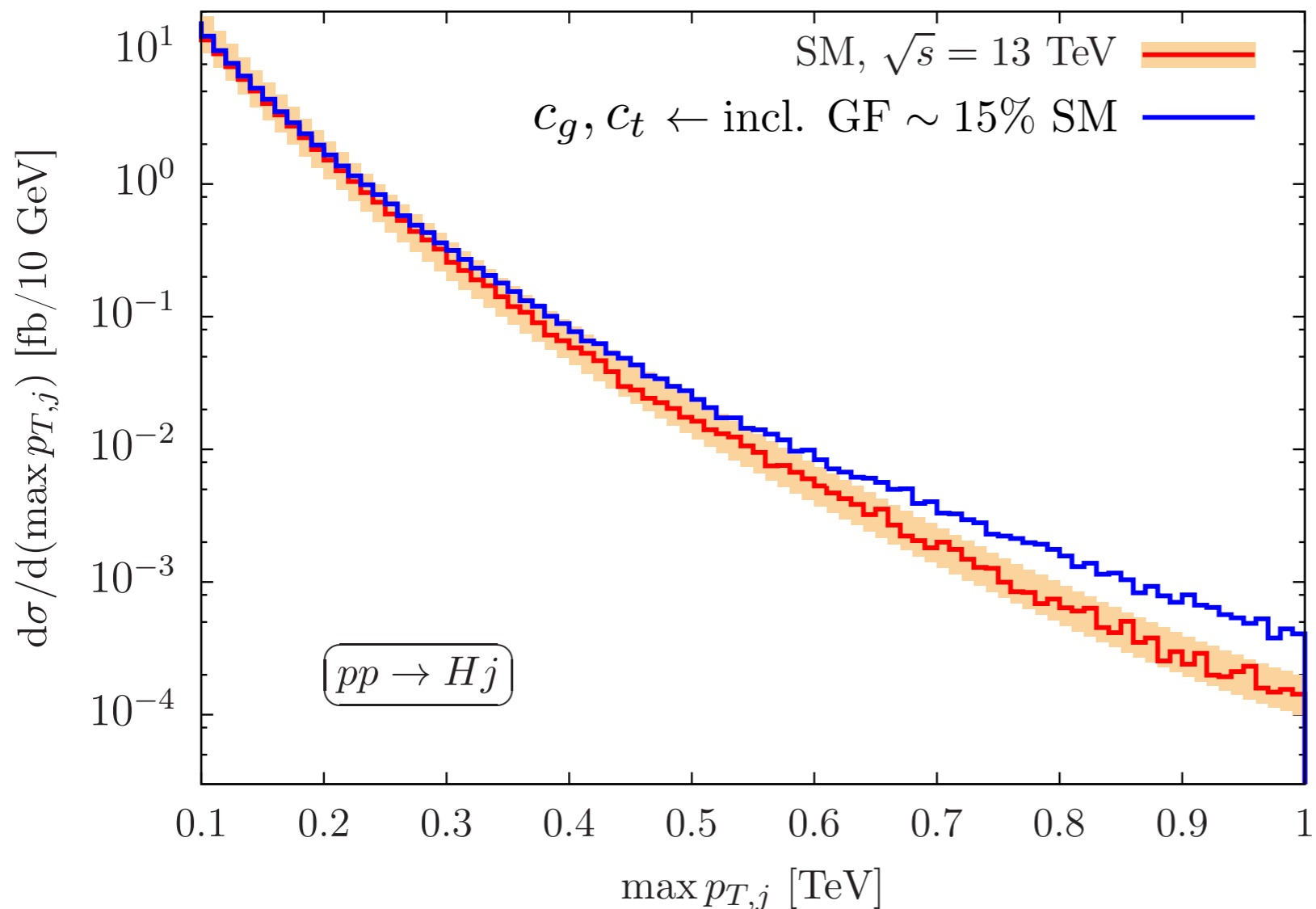
- ▶ way out: resolve  $C_0$  function for  $p_T(H) \gtrsim m_t$  with one or more jets

[Banfi, Martin, Sanz `13] [Grojean, Salvioni, Schaller, Weiler `13]

[Schaller et al `14] [Buschmann et al. `14] [Buschmann et al. `14]

# SM-like couplings

A word of caution



- ▶ way out: resolve  $C_0$  function for  $p_T(H) \gtrsim m_t$  with one or more jets

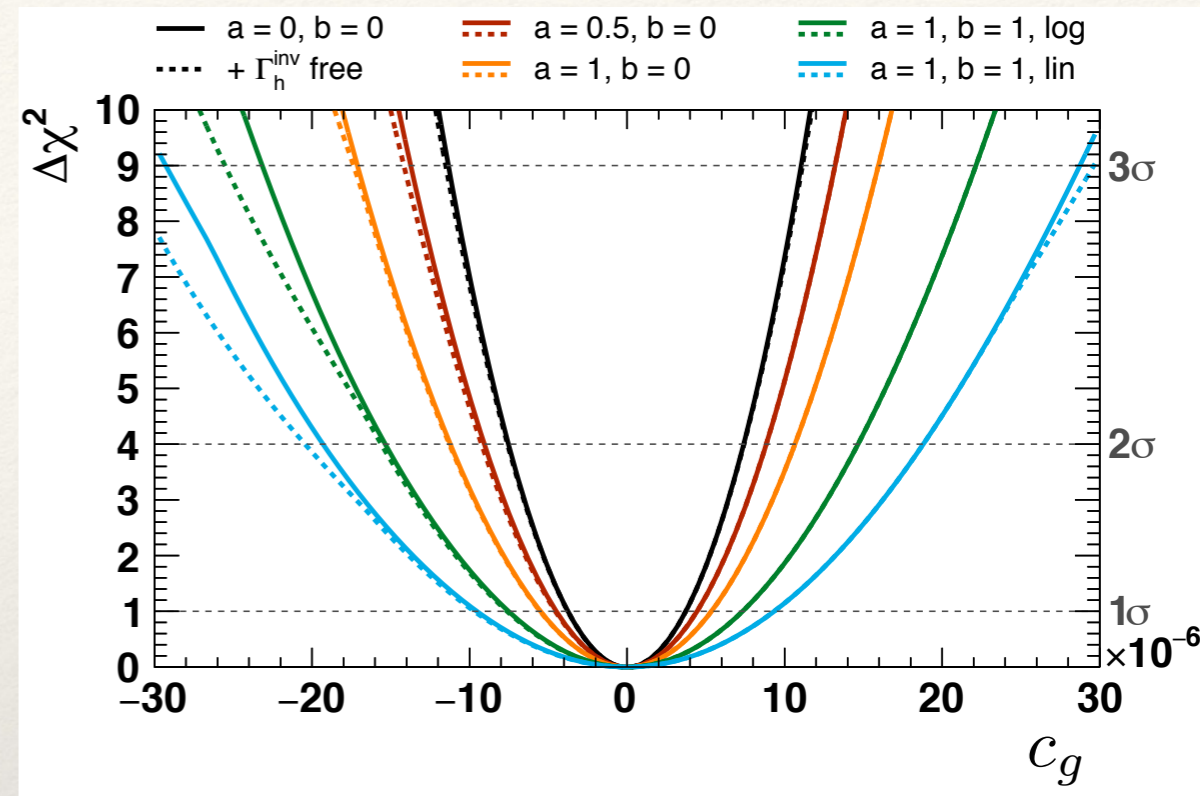
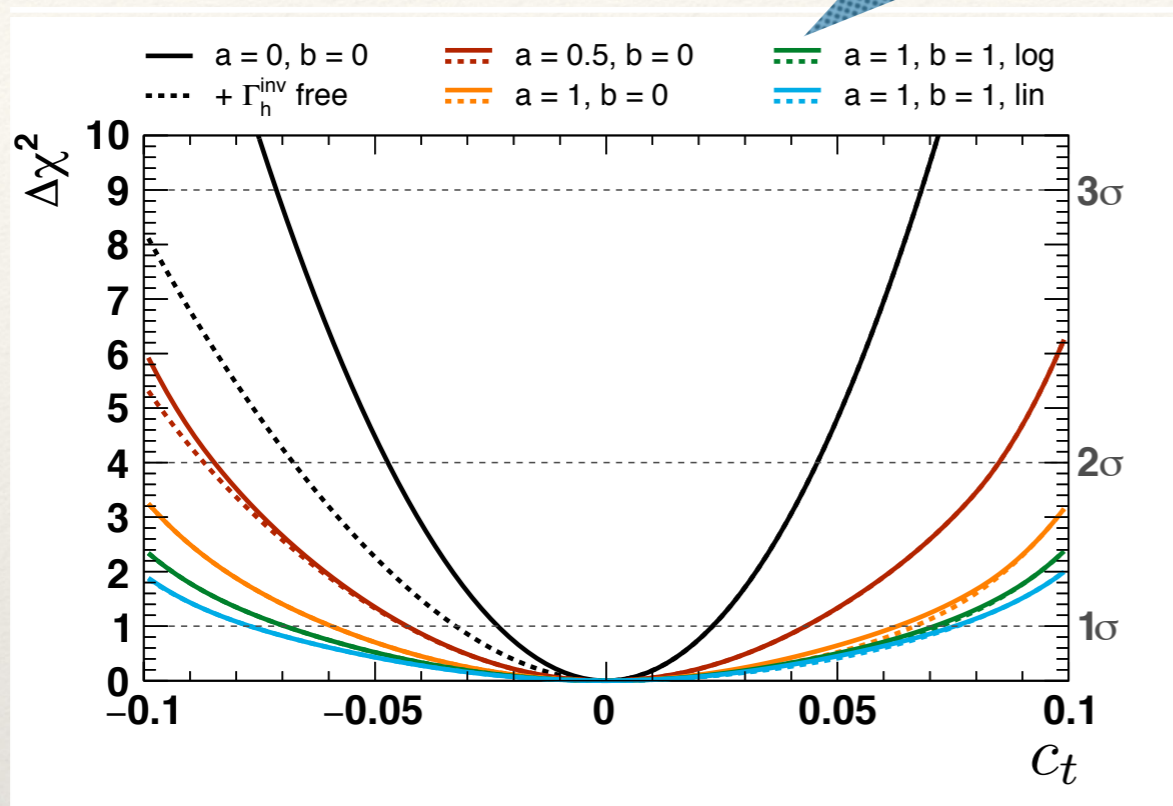
[Banfi, Martin, Sanz `13] [Grojean, Salvioni, Schaller, Weiler `13]

[Schaller et al `14] [Buschmann et al. `14] [Buschmann et al. `14]

steer  $p_T(H)$  shape uncertainty

[CE, Kogler, Schulz, Spannowsky '17]

Role of uncertainties



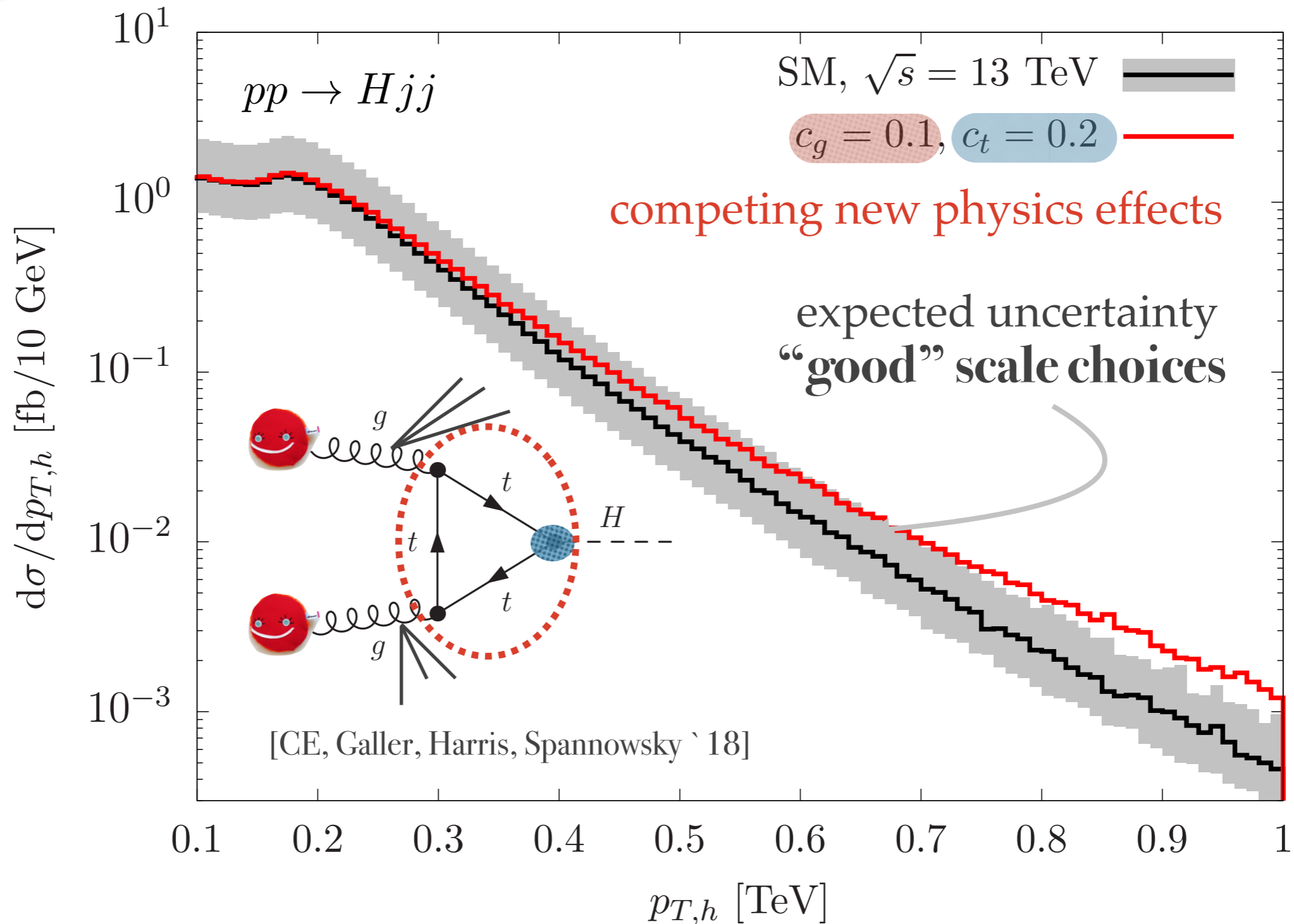
- comparably small impact of tail uncertainties (lin vs log  $\sim 35\%$  different shape uncertainty at 150 GeV  $p_T$ )
- **decoupled (non-resonant) new physics perturbatively constrained at relatively low transverse momentum**

large stats!

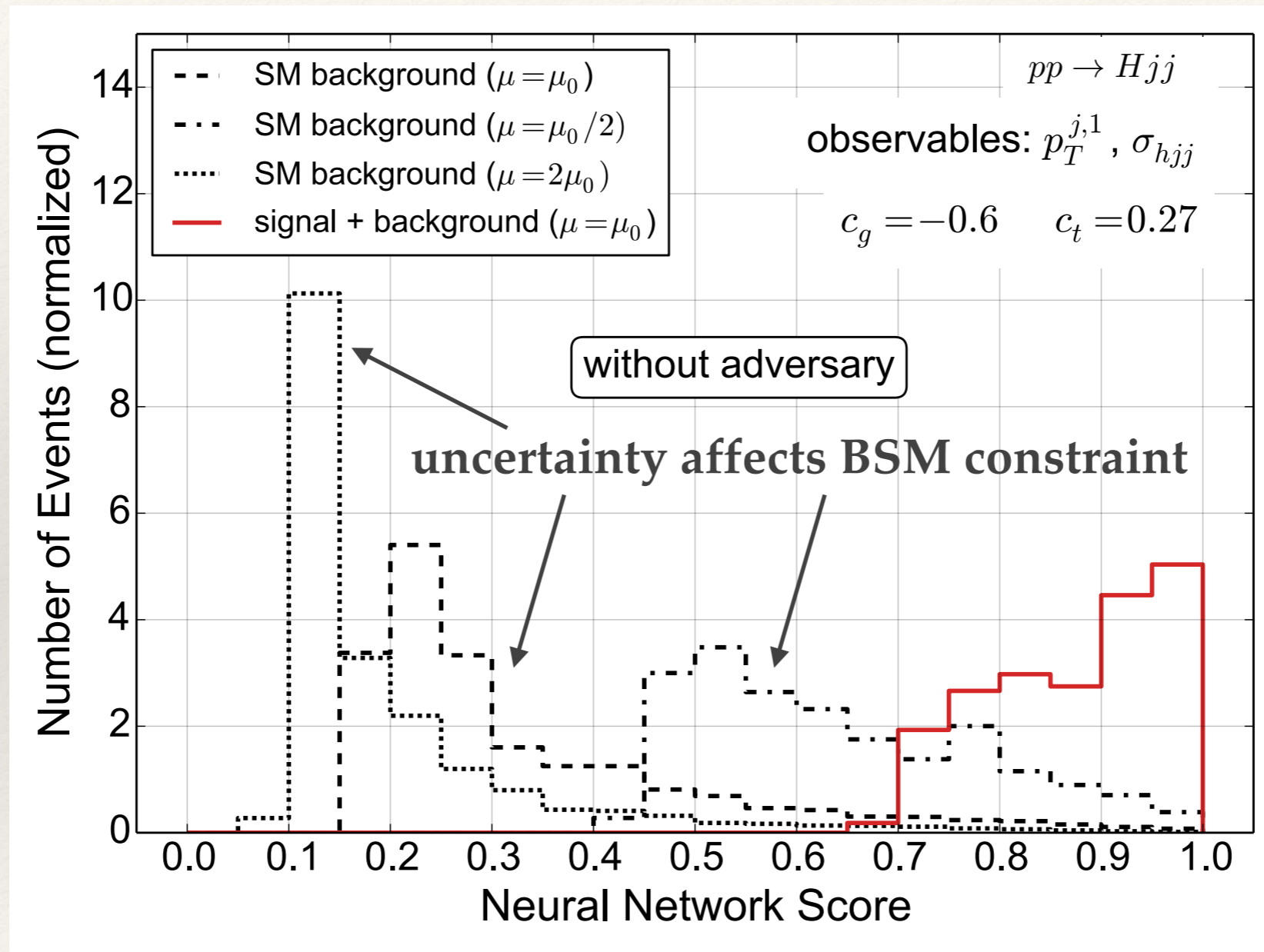
# SM-like couplings

- more kinematic information for  $H+2j$ , which is particularly promising, unfortunately  $m_t \rightarrow \infty$  SM limit accidentally good

[Del Duca et al. '03]



- ▶ more kinematic information for  $H+2j$ , which is particularly promising, unfortunately  $m_t=\infty$  SM limit accidentally good

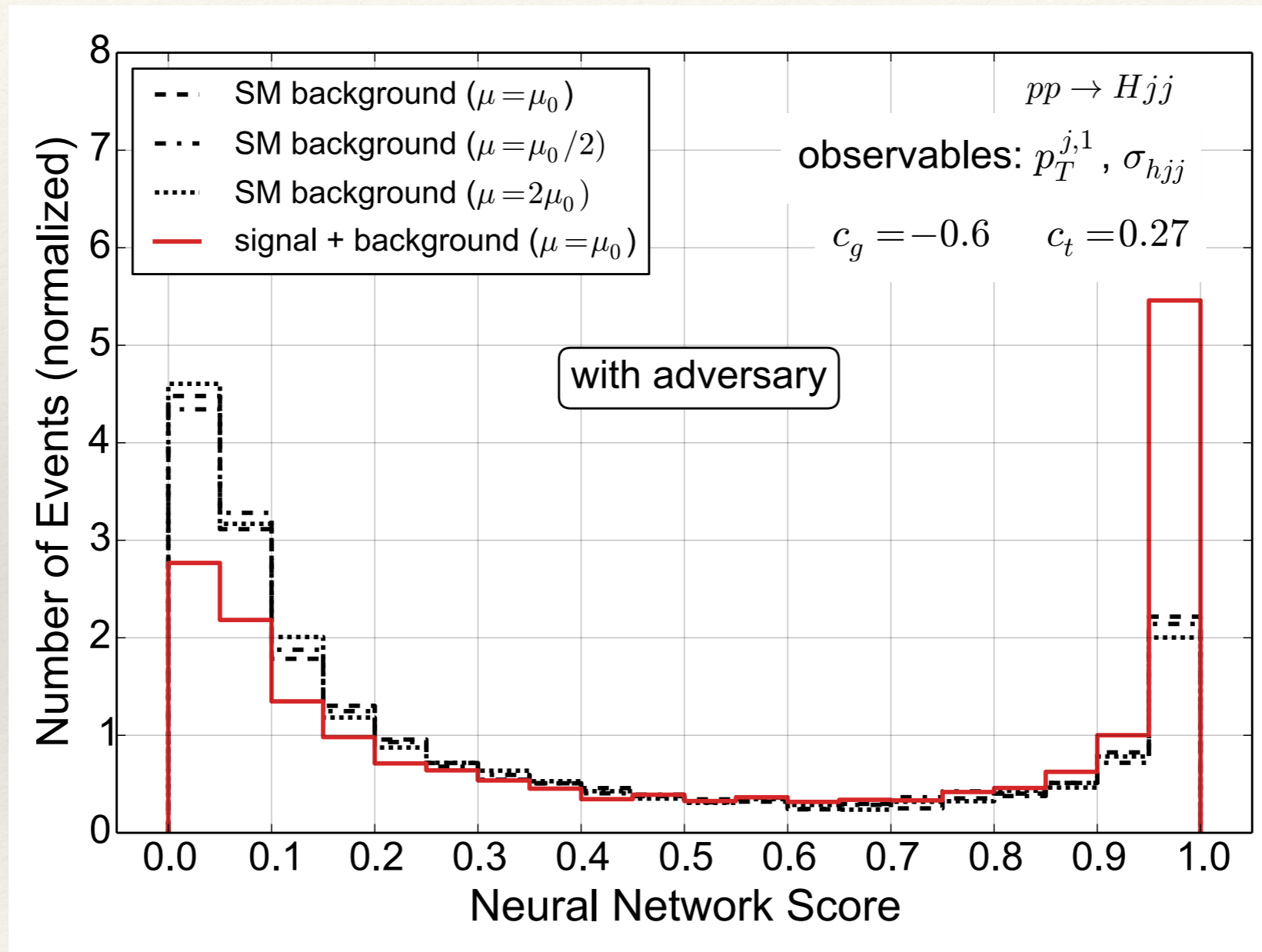


neural net learns regions that are sensitive to uncertainty....

# SM-like couplings

[CE, Galler, Harris, Spannowsky `18]

- ▶ more kinematic information for  $H+2j$ , which is particularly promising, unfortunately  $m_t=\infty$  SM limit accidentally good



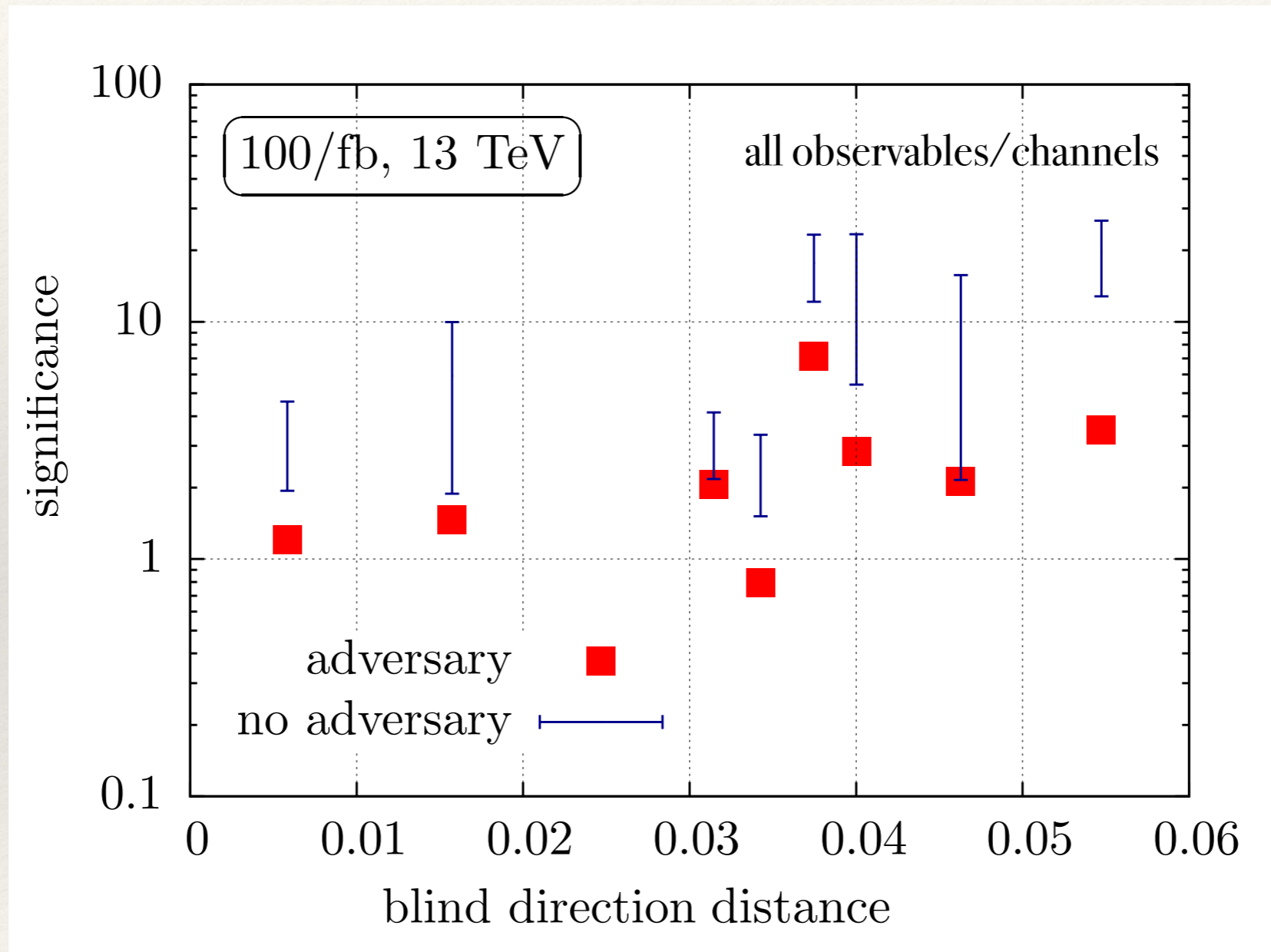
... and can be forced to avoid them → **most robust constraints**

[Goodfellow et al. `14] [Louppe, Kagan, Cranmer `16] ...

# SM-like couplings

[CE, Galler, Harris, Spannowsky `18]

- ▶ more kinematic information for  $H+2j$ , which is particularly promising, unfortunately  $m_t=\infty$  SM limit accidentally good



... and can be forced to avoid them → **most robust constraints**

[Goodfellow et al. `14] [Louppe, Kagan, Cranmer `16] ...



# CP violation

- ▶ a repeating point of argument is inclusion of  $(\text{dim } 6)^2$  as there is no clear right or wrong

matching

MC  
perturbativity

unitarity...

$$d\sigma \sim |\mathcal{M}_{\text{SM}}|^2 + 2\text{Re}\{\mathcal{M}_{\text{SM}}\mathcal{M}_{\text{d6}}^*\} + |\mathcal{M}_{\text{d6}}|^2$$
$$\sim \Lambda^0 \qquad \qquad \sim \Lambda^{-2} \qquad \qquad \sim \Lambda^{-4}$$

dim 8...

# CP violation

- ▶ a repeating point of argument is inclusion of  $(\dim 6)^2$  as there is no clear right or wrong

matching

MC  
perturbativity

unitarity...

- ▶ in practice this is (often) not a huge problem for large data samples

# CP violation

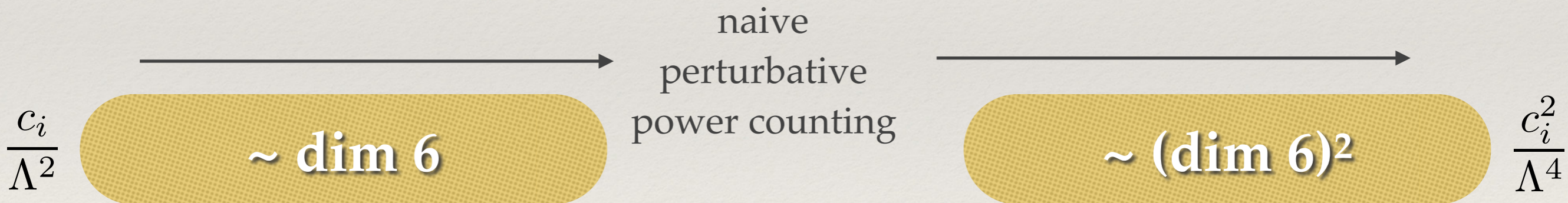
- ▶ a repeating point of argument is inclusion of  $(\text{dim } 6)^2$  as there is no clear right or wrong

matching

MC  
perturbativity

unitarity...

- ▶ in practice this is (often) not a huge problem for large data samples
- ▶ qualitatively different for CP-violation:



- ▶ only genuinely CP-sensitive observables carry information

signed  $\Delta\phi_{jj}$ , asymmetries, ....

- ▶ every CP-even observable carries information

cross sections, widths, pT spectra...

# CP violation

[Bernlochner, CE, Hays, Lohwasser, Mildner, Pilkington, Price, Spannowsky `18]

## ▶ the linearised upshot

$$\begin{aligned}
 O_{H\tilde{G}} &= H^\dagger H G^{a\mu\nu} \tilde{G}_{\mu\nu}^a, \\
 O_{H\tilde{W}} &= H^\dagger H W^{a\mu\nu} \tilde{W}_{\mu\nu}^a, \\
 O_{H\tilde{B}} &= H^\dagger H B^{\mu\nu} \tilde{B}_{\mu\nu}, \\
 O_{H\tilde{W}B} &= H^\dagger \tau^a H B_{\mu\nu} \tilde{W}^{a\mu\nu}
 \end{aligned}$$

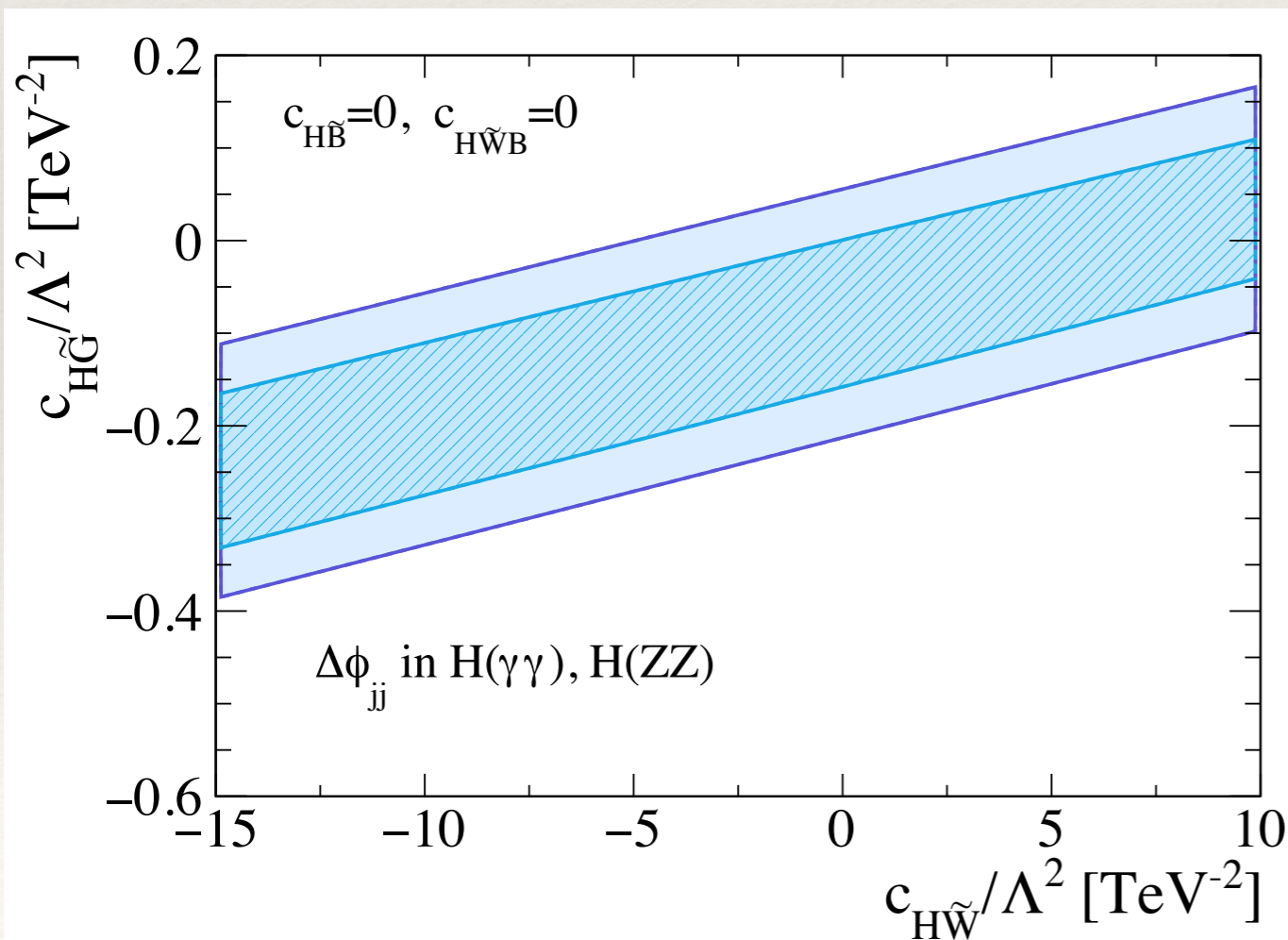
+

top quark

$$\sim \frac{\alpha_s}{8\pi v} G_{\mu\nu}^a \tilde{G}^{a\mu\nu} h = \tilde{O}_G$$

Yukawa phases

*...ignore them for now...*



- fit uses ATLAS results for 4 leptons,  $\gamma\gamma$

[ATLAS 1708.02810; 1802.04146]

- small stats/observables = blind directions for decay vs production
- non-significant asymmetry

**$0.3 \pm 0.2$**

# CP violation

[Bernlochner, CE, Hays, Lohwasser, Mildner, Pilkington, Price, Spannowsky `18]

## ▶ the linearised upshot

$$\begin{aligned}
 O_{H\tilde{G}} &= H^\dagger H G^{a\mu\nu} \tilde{G}_{\mu\nu}^a, \\
 O_{H\tilde{W}} &= H^\dagger H W^{a\mu\nu} \tilde{W}_{\mu\nu}^a, \\
 O_{H\tilde{B}} &= H^\dagger H B^{\mu\nu} \tilde{B}_{\mu\nu}, \\
 O_{H\tilde{W}B} &= H^\dagger \tau^a H B_{\mu\nu} \tilde{W}^{a\mu\nu}
 \end{aligned}$$

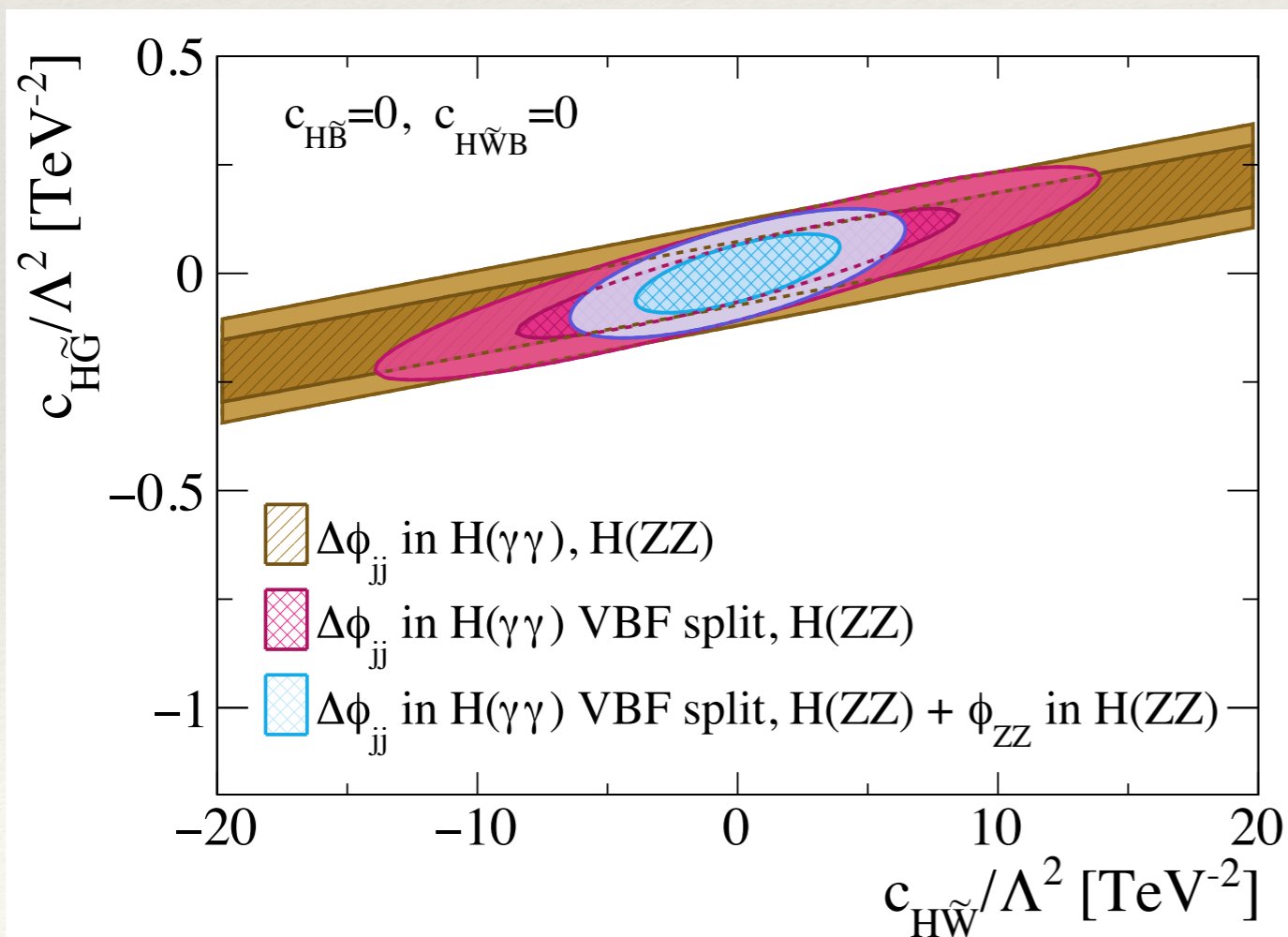
+

top quark

$$\sim \frac{\alpha_s}{8\pi v} G_{\mu\nu}^a \tilde{G}^{a\mu\nu} h = \tilde{O}_G$$

Yukawa phases

*...ignore them for now...*



- can already narrow this down with 36/fb by using
  - GF vs VBF selections
  - lepton decay plane angles

# CP violation

[Bernlochner, CE, Hays, Lohwasser, Mildner, Pilkington, Price, Spannowsky `18]

## the linearised upshot

$$\begin{aligned}
 O_{H\tilde{G}} &= H^\dagger H G^{a\mu\nu} \tilde{G}_{\mu\nu}^a, \\
 O_{H\tilde{W}} &= H^\dagger H W^{a\mu\nu} \tilde{W}_{\mu\nu}^a, \\
 O_{H\tilde{B}} &= H^\dagger H B^{\mu\nu} \tilde{B}_{\mu\nu}, \\
 O_{H\tilde{W}B} &= H^\dagger \tau^a H B_{\mu\nu} \tilde{W}^{a\mu\nu}
 \end{aligned}$$

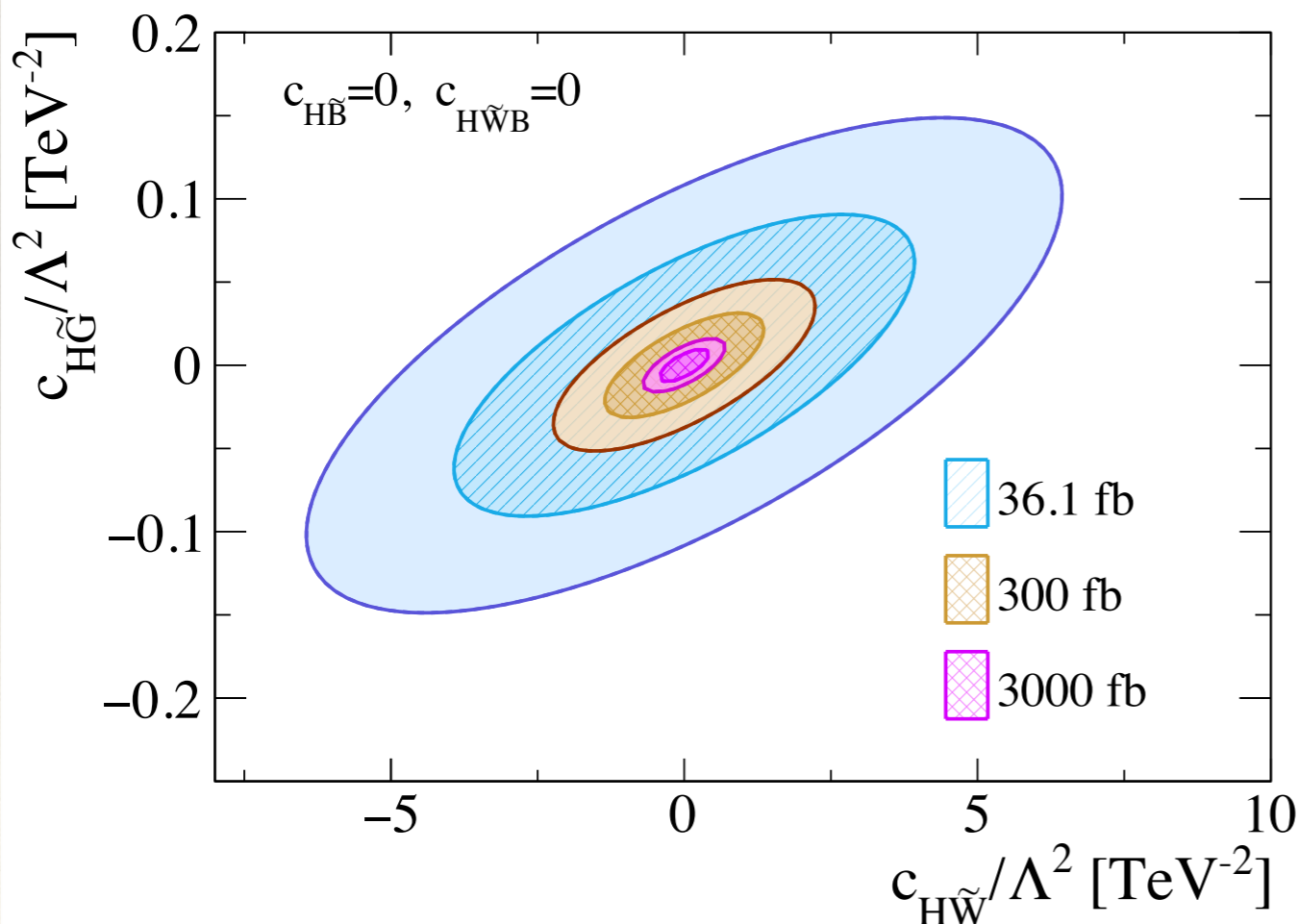
+

Yukawa phases

top quark

$$\sim \frac{\alpha_s}{8\pi v} G_{\mu\nu}^a \tilde{G}^{a\mu\nu} h = \tilde{O}_G$$

*...ignore them for now...*



LHC and HL-LHC  
extrapolations

Coefficient [TeV <sup>-2</sup> ]	36.1 fb <sup>-1</sup>	300 fb <sup>-1</sup>	3000 fb <sup>-1</sup>
$c_{H\tilde{G}}/\Lambda^2$	[-0.19, 0.19]	[-0.067, 0.067]	[-0.021, 0.021]
$c_{H\tilde{W}}/\Lambda^2$	[-11, 11]	[-3.8, 3.8]	[-1.2, 1.2]
$c_{H\tilde{B}}/\Lambda^2$	[-5.9, 5.9]	[-2.1, 2.1]	[-0.65, 0.65]
$c_{H\tilde{W}B}/\Lambda^2$	[-14, 14]	[-4.9, 4.9]	[-1.5, 1.5]

- ▶ lifting top-specific blind directions

$$O_{H\tilde{G}} = H^\dagger H G^{a\mu\nu} \tilde{G}_{\mu\nu}^a +$$

top quark

$$\sim \frac{\alpha_s}{8\pi v} G_{\mu\nu}^a \tilde{G}^{a\mu\nu} h = \tilde{O}_G$$

top Yukawa phase

[Del Duca et al. '03]

- ▶  $m_t \rightarrow \infty$  SM limit accidentally good

large stats / kin.  
coverage necessary

- ▶ split GF selection into  $m_t$ -related Higgs  $p_T$  threshold  $\sim 150$  GeV

# CP violation

[CE, Galler, Pilkington, Spannowsky in prep.]

- ▶ lifting top-specific blind directions

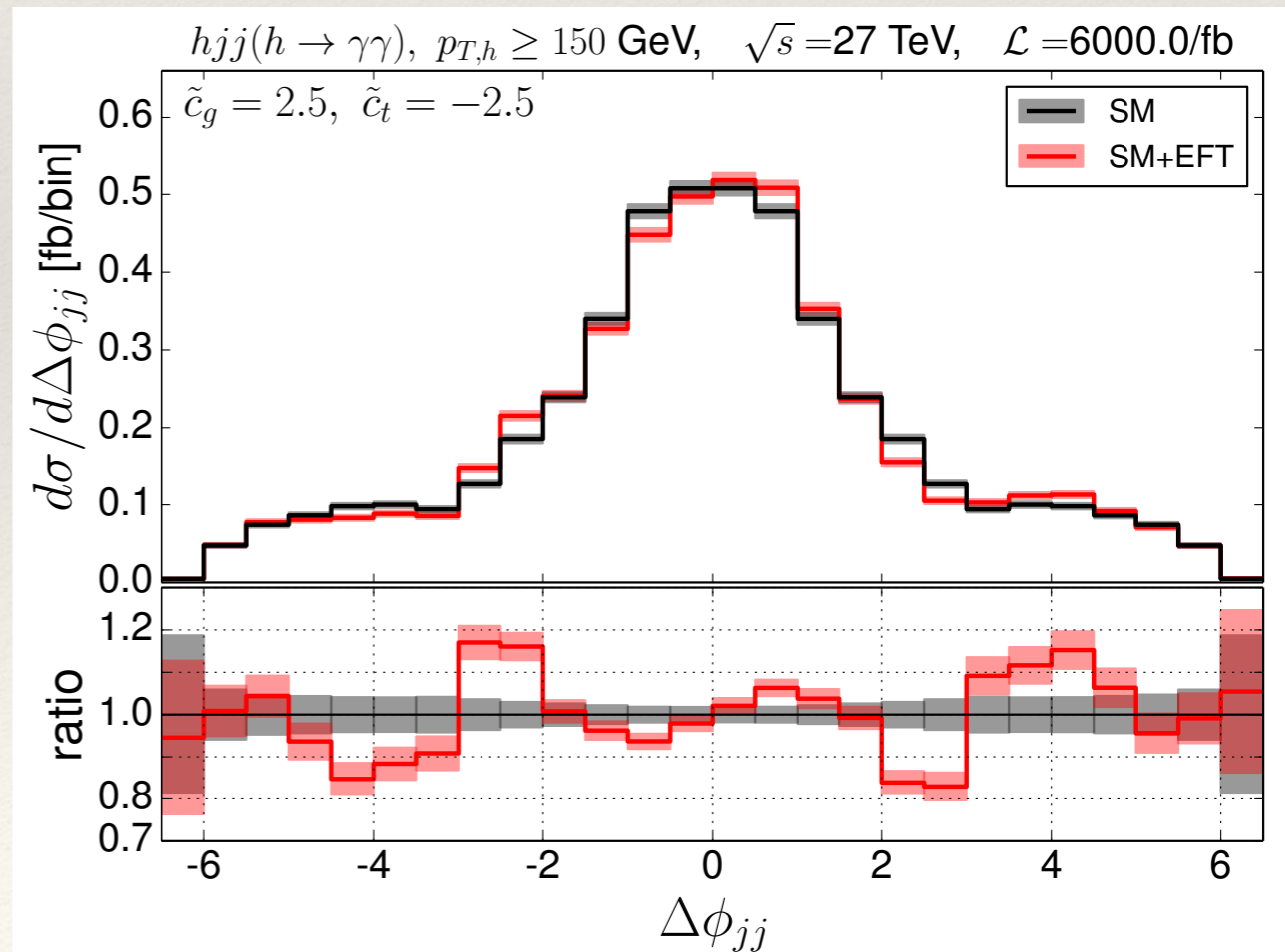
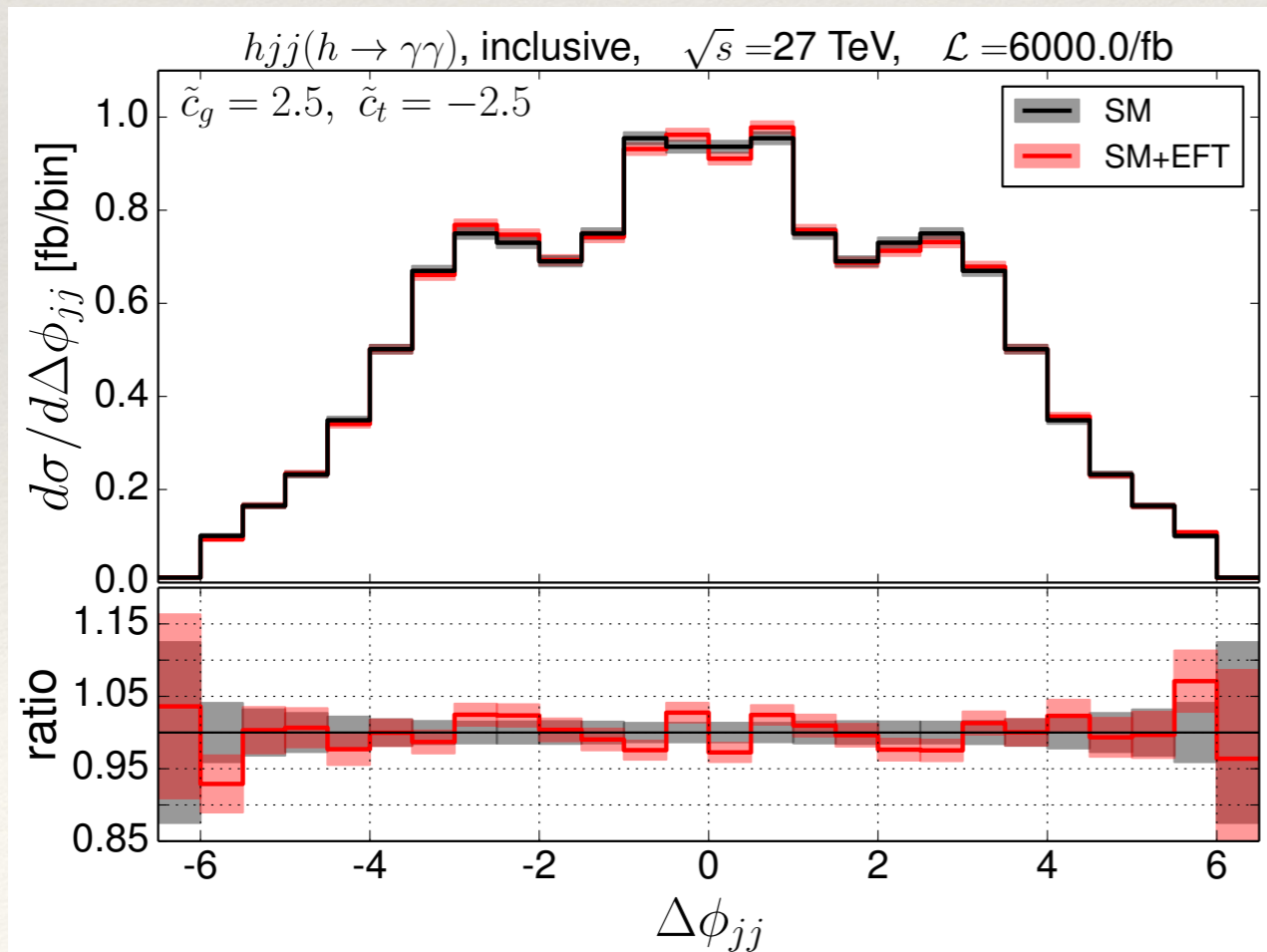
top quark

$$\sim \frac{\alpha_s}{8\pi v} G_{\mu\nu}^a \tilde{G}^{a\mu\nu} h = \tilde{O}_G$$

$$O_{H\tilde{G}} = H^\dagger H G^{a\mu\nu} \tilde{G}_{\mu\nu}^a +$$

top Yukawa phase

- ▶ split GF selection into  $m_t$ -related Higgs  $p_T$  threshold  $\sim 150$  GeV





# CP violation

[CE, Galler, Pilkington, Spannowsky in prep.]

- lifting top-specific blind directions

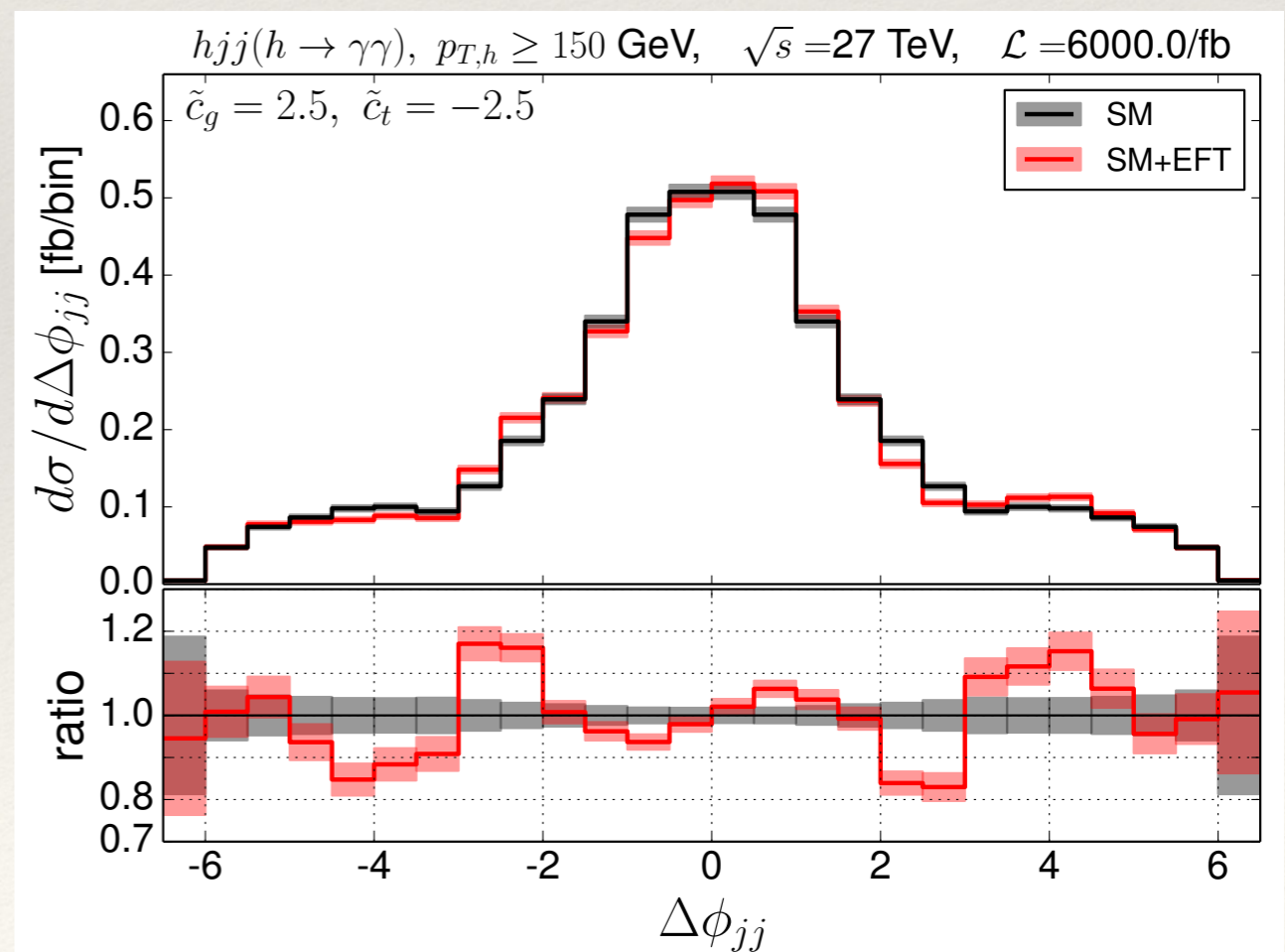
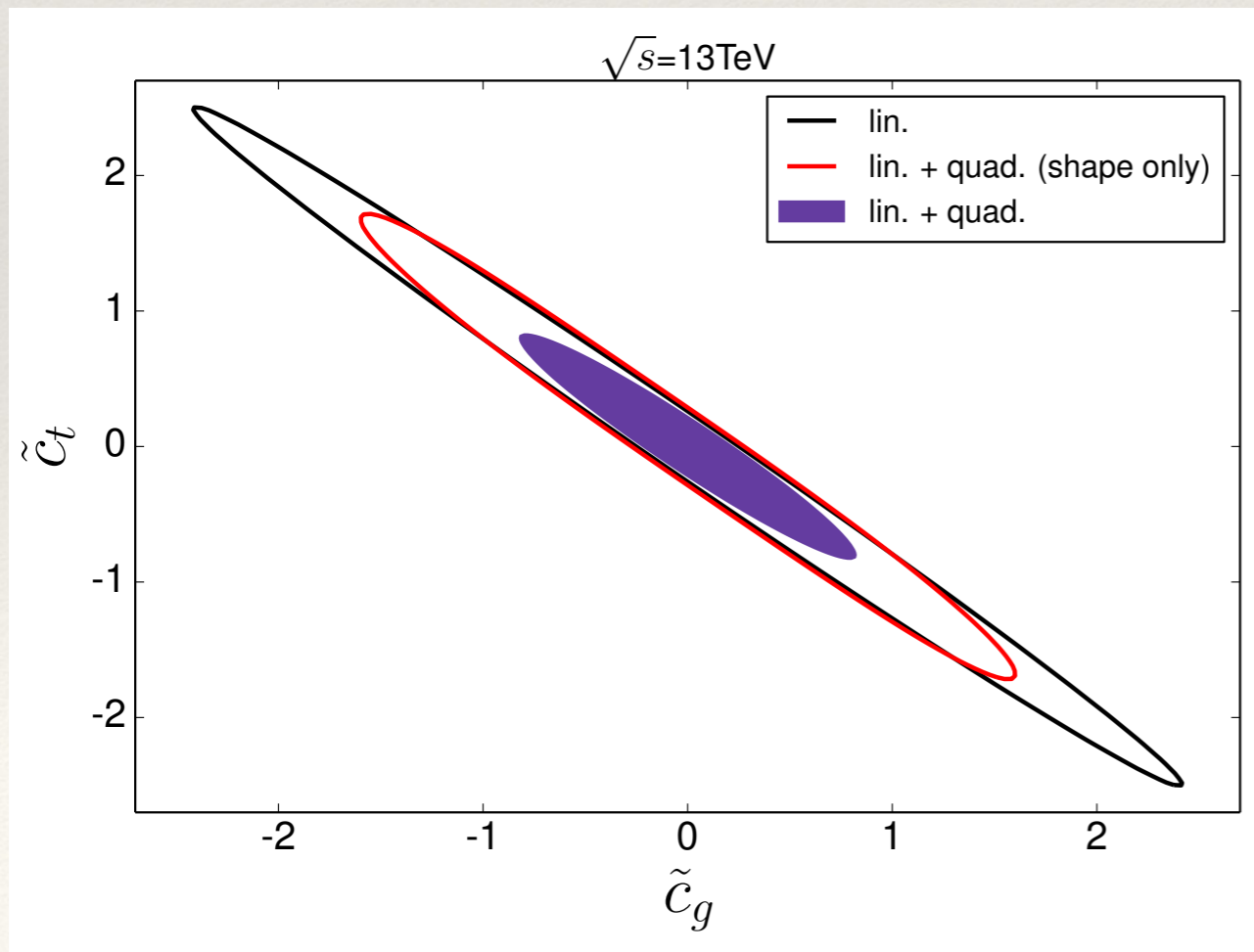
top quark

$$\sim \frac{\alpha_s}{8\pi v} G_{\mu\nu}^a \tilde{G}^{a\mu\nu} h = \tilde{O}_G$$

$$O_{H\tilde{G}} = H^\dagger H G^{a\mu\nu} \tilde{G}_{\mu\nu}^a +$$

top Yukawa phase

- split GF selection into  $m_t$ -related Higgs  $p_T$  threshold  $\sim 150$  GeV



# CP violation

[CE, Galler, Pilkington, Spannowsky in prep.]

- lifting top-specific blind directions

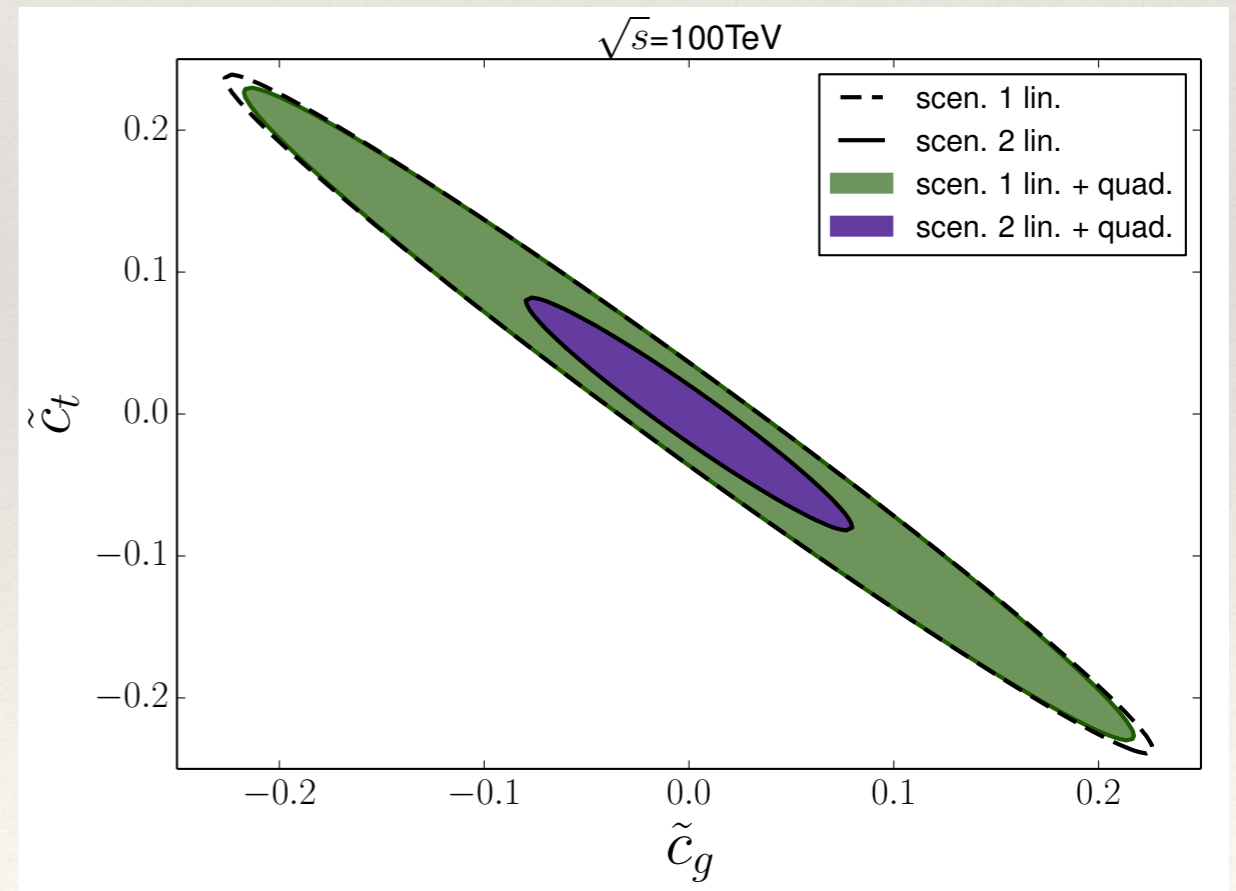
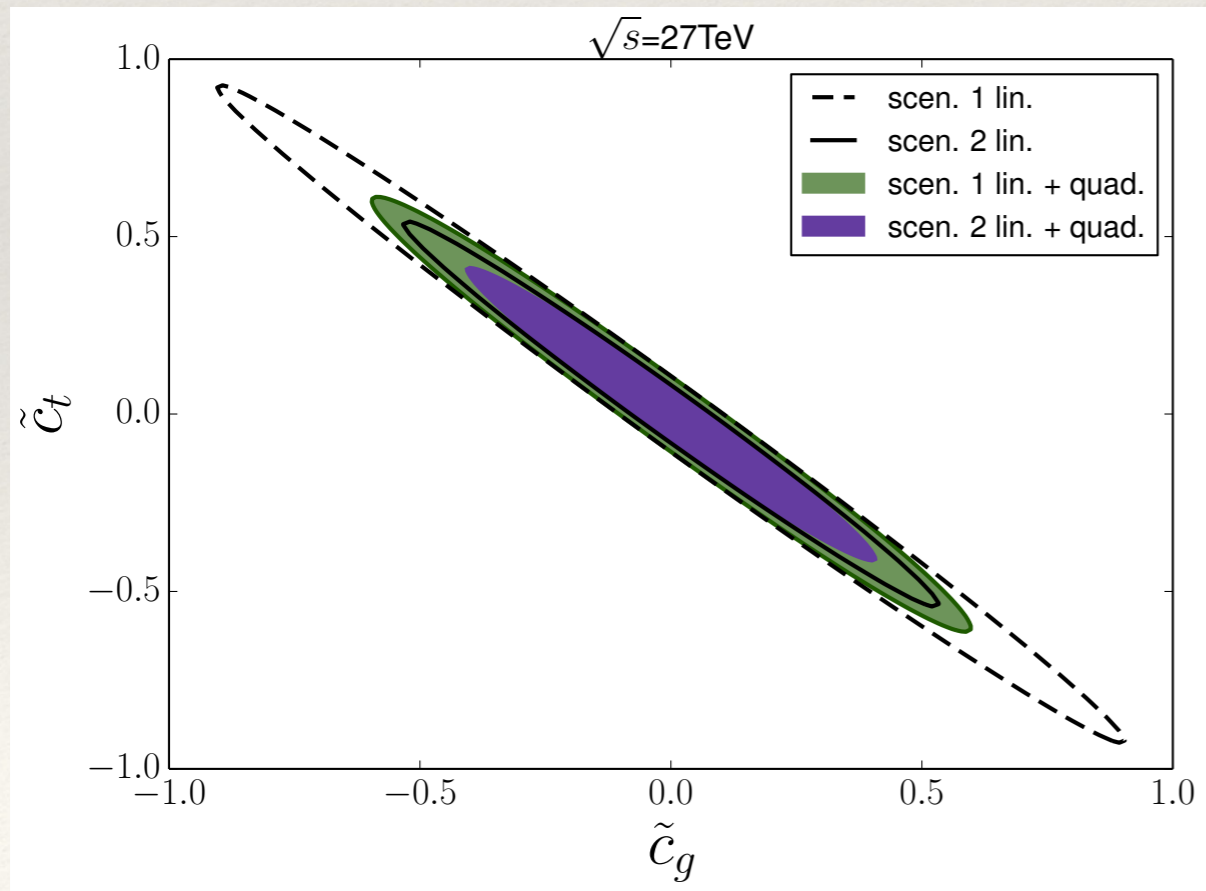
top quark  
 $\sim \frac{\alpha_s}{8\pi v} G_{\mu\nu}^a \tilde{G}^{a\mu\nu} h = \tilde{O}_G$

$$O_{H\tilde{G}} = H^\dagger H G^{a\mu\nu} \tilde{G}_{\mu\nu}^a$$

+

top Yukawa phase

- split GF selection into  $m_t$ -related Higgs  $p_T$  threshold  $\sim 150$  GeV



# HH pheno

# LHC blind spots: Higgs potential

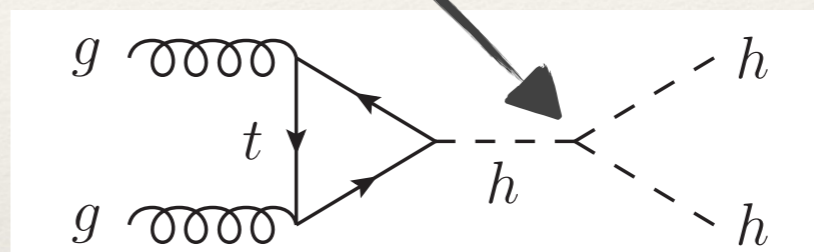
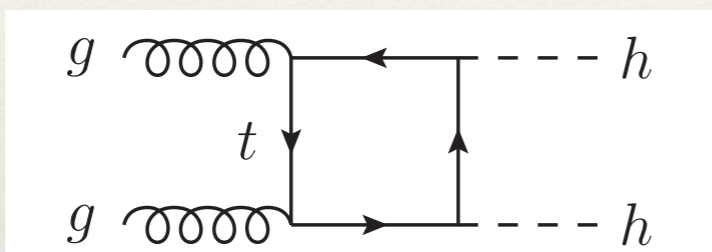
- dimension 6 deformations of the Higgs potential

$$V(H^\dagger H)_6 \supset c_6/\Lambda^2 (H^\dagger H)^3$$

e.g.

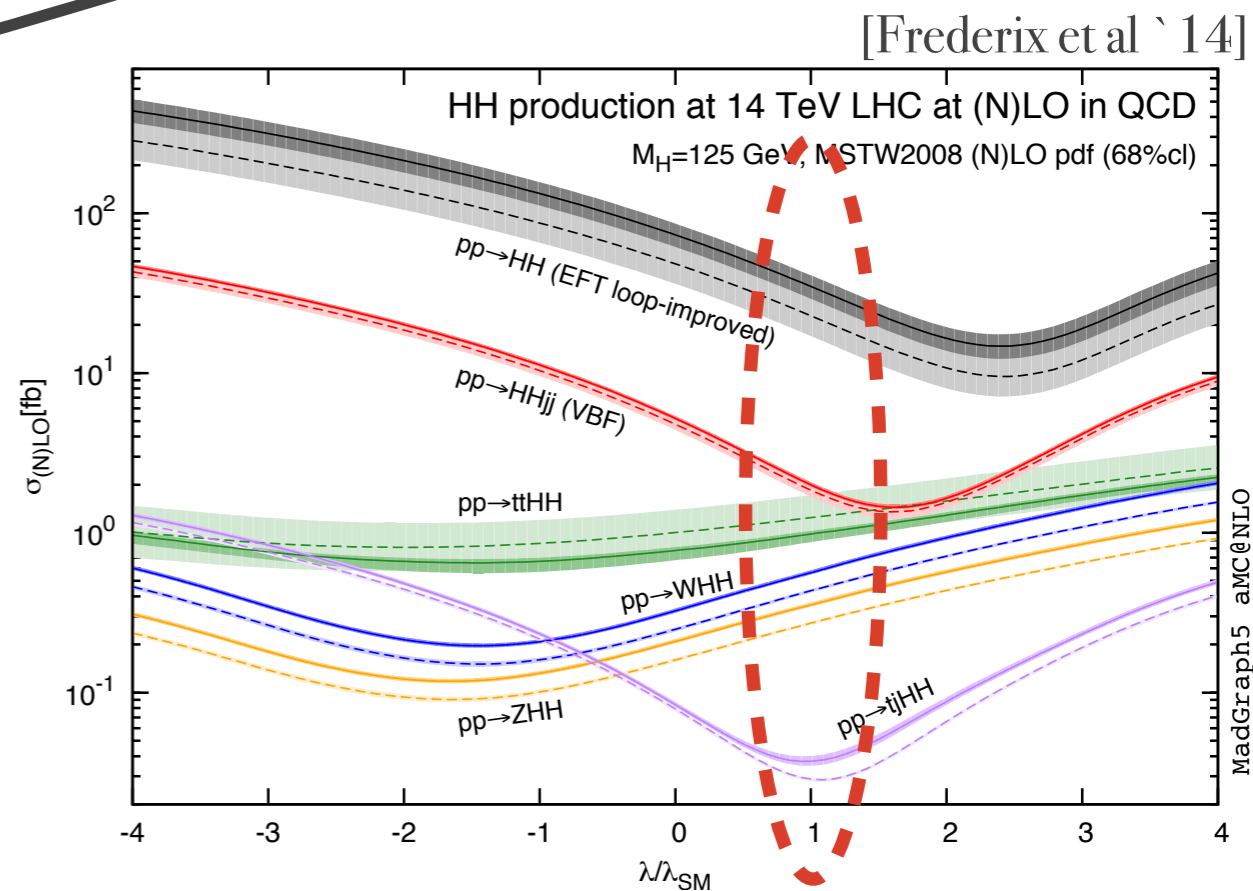
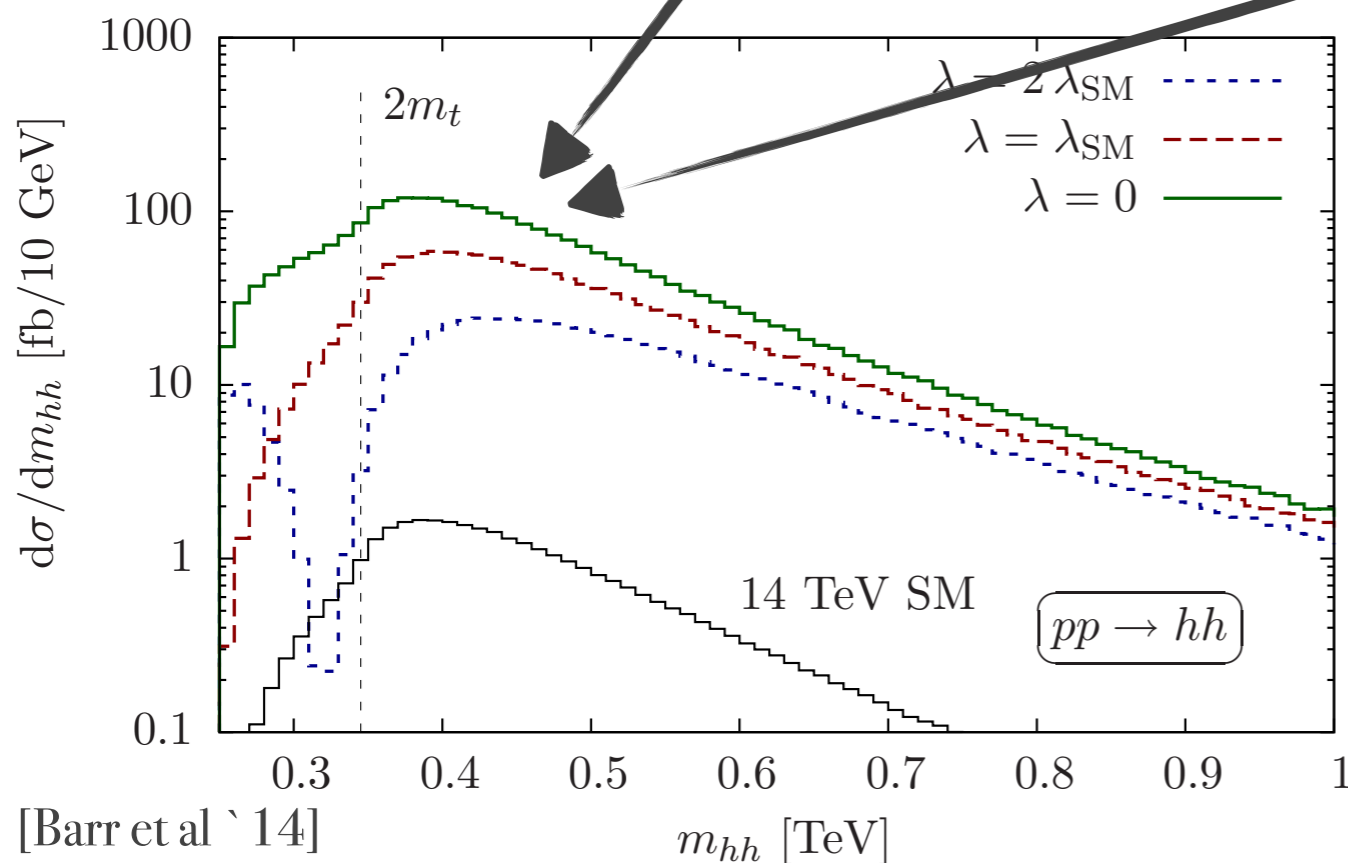
[Giudice, Grojean, Pomarol, Rattazzi '07]

modify Higgs self-interactions. Large top-threshold interference.

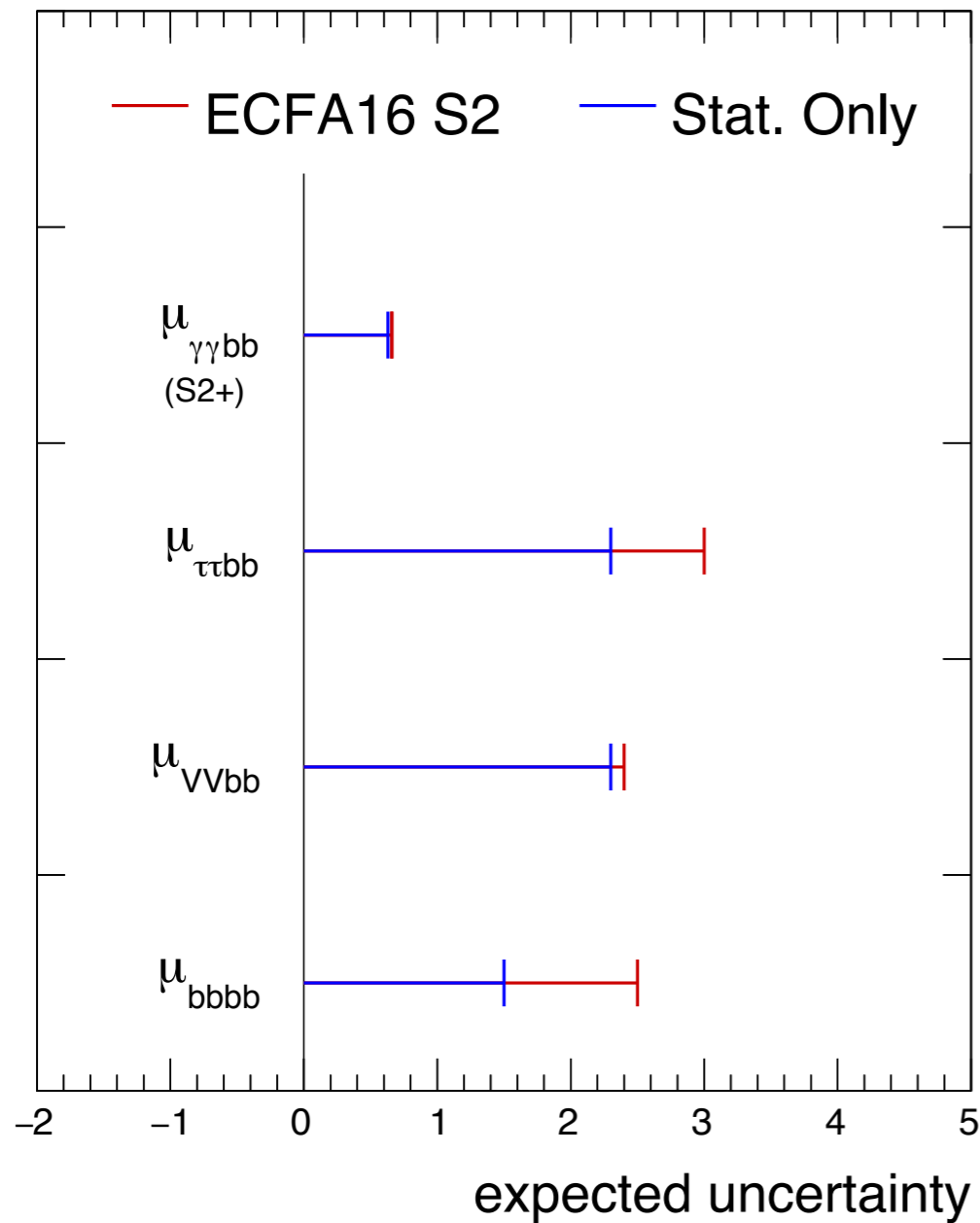


e.g.

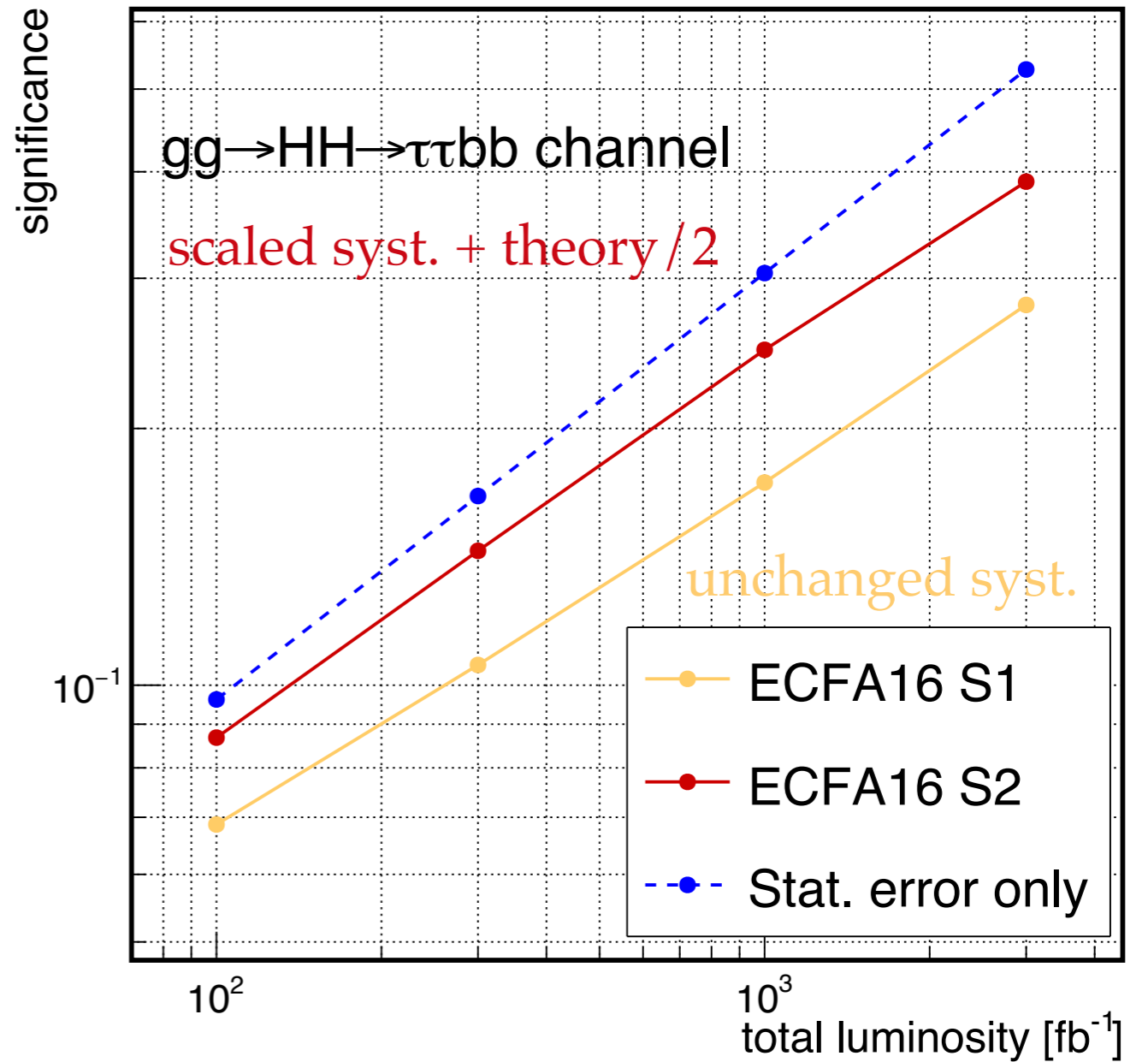
[Glover, van der Bij '88]



**CMS** Projection  $\sqrt{s} = 13$  TeV SM  $gg \rightarrow HH$



**CMS** projection (13 TeV)

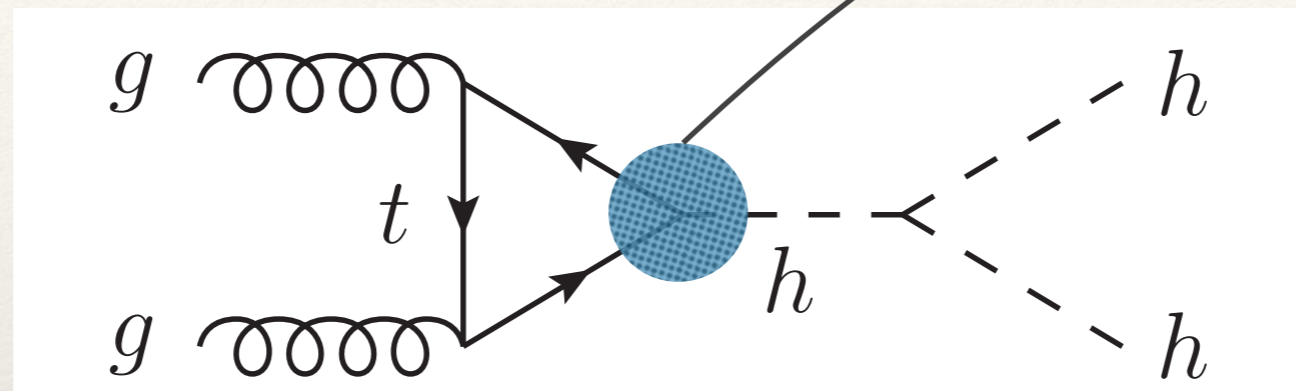


# HH pheno

## LHC blind spots: Higgs potential

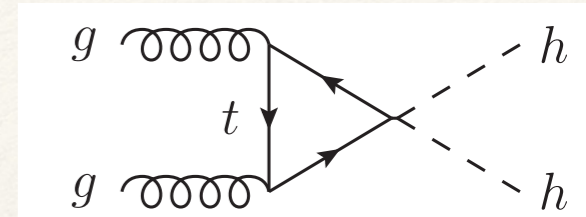
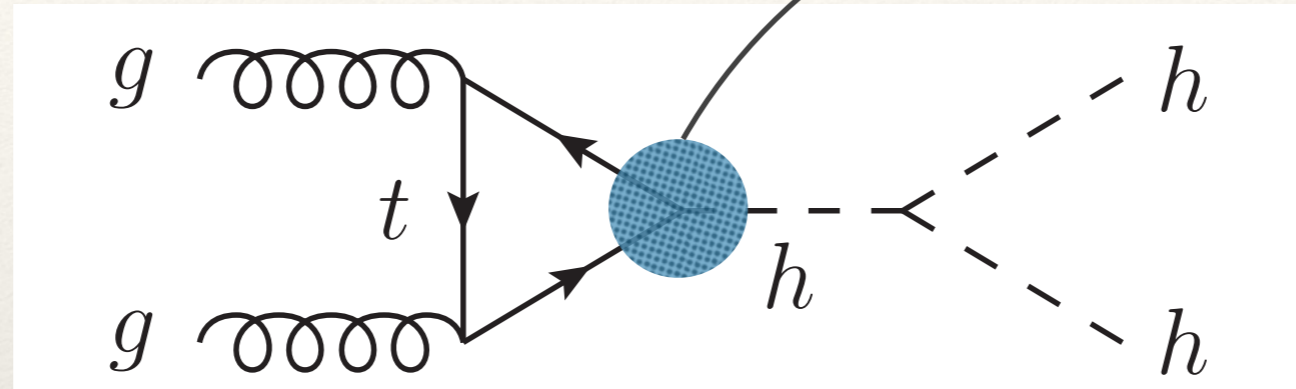
▶ however...

correlated with on-shell Higgs phenomenology



- ▶ however...

correlated with on-shell Higgs phenomenology  
broken by  $\sim \bar{t}th^2/\Lambda \dots$

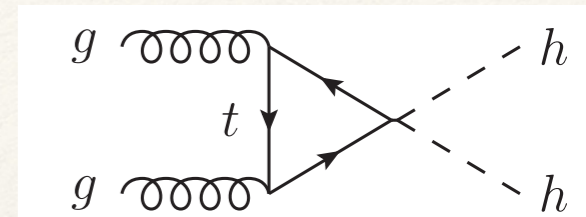
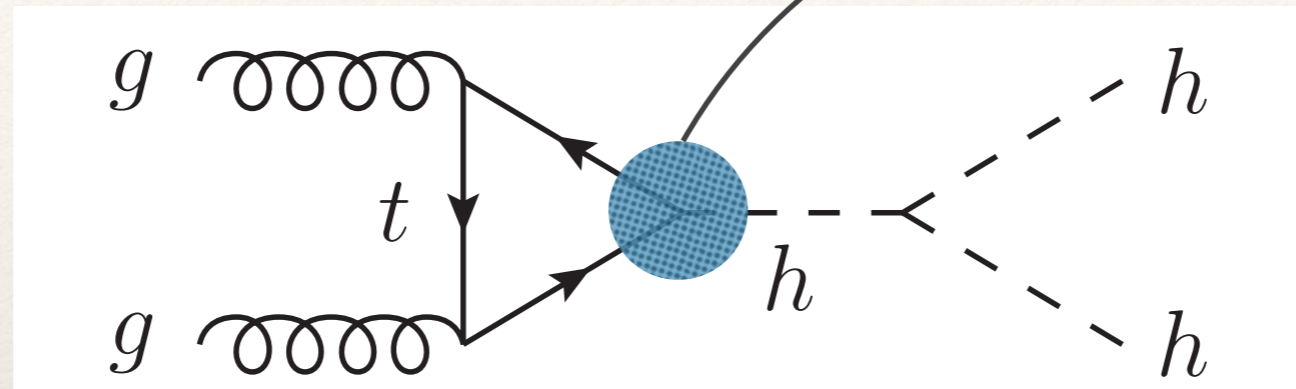


[Gröber, Mühlleitner '10]

- ▶ easy to arrange EFT coefficients in a way to get spectacular rates, but can doubt physical relevance of such limits ( $\rightarrow$  matching)

- ▶ however...

correlated with on-shell Higgs phenomenology  
broken by  $\sim \bar{t}th^2/\Lambda \dots$

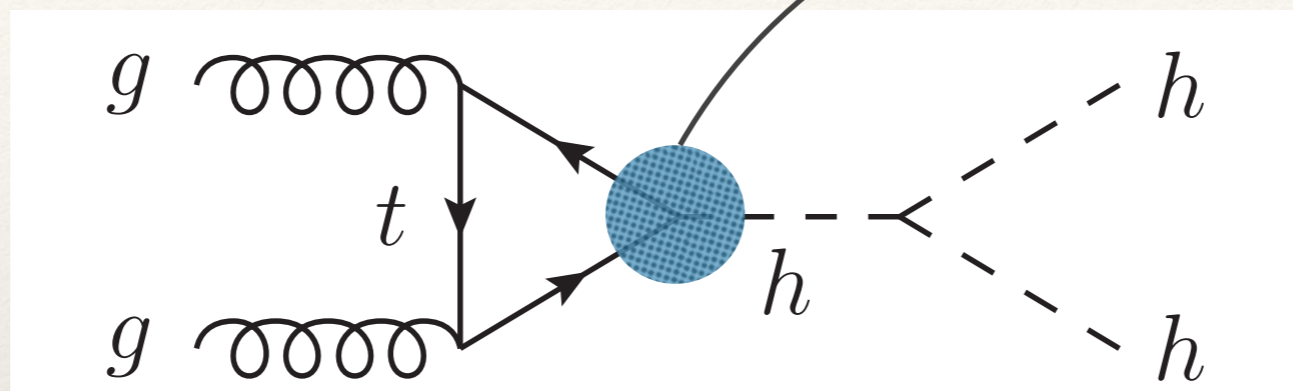


[Gröber, Mühlleitner '10]

- ▶ easy to arrange EFT coefficients in a way to get spectacular rates, but can doubt physical relevance of such limits ( $\rightarrow$  matching)
- ▶ bit what about concrete Higgs sector extensions?
  - ▶ extrapolate 125 GeV signal strengths
  - ▶ extrapolate exotic Higgs searches
  - ▶ additional constraints (*electron EDMs, flavor, perturbativity, ...*)

- ▶ however...

correlated with on-shell Higgs phenomenology  
broken by  $\sim \bar{t}th^2/\Lambda \dots$

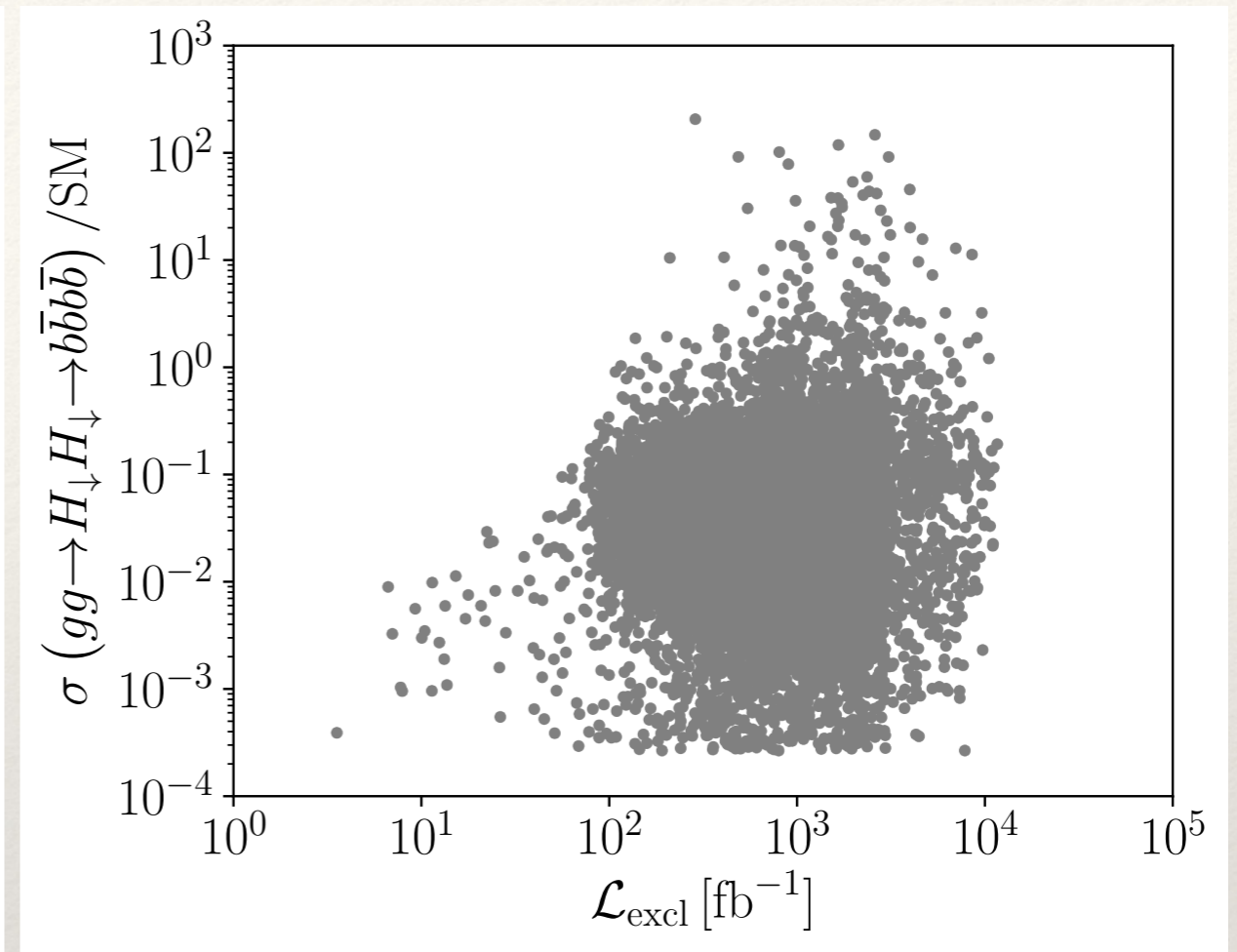
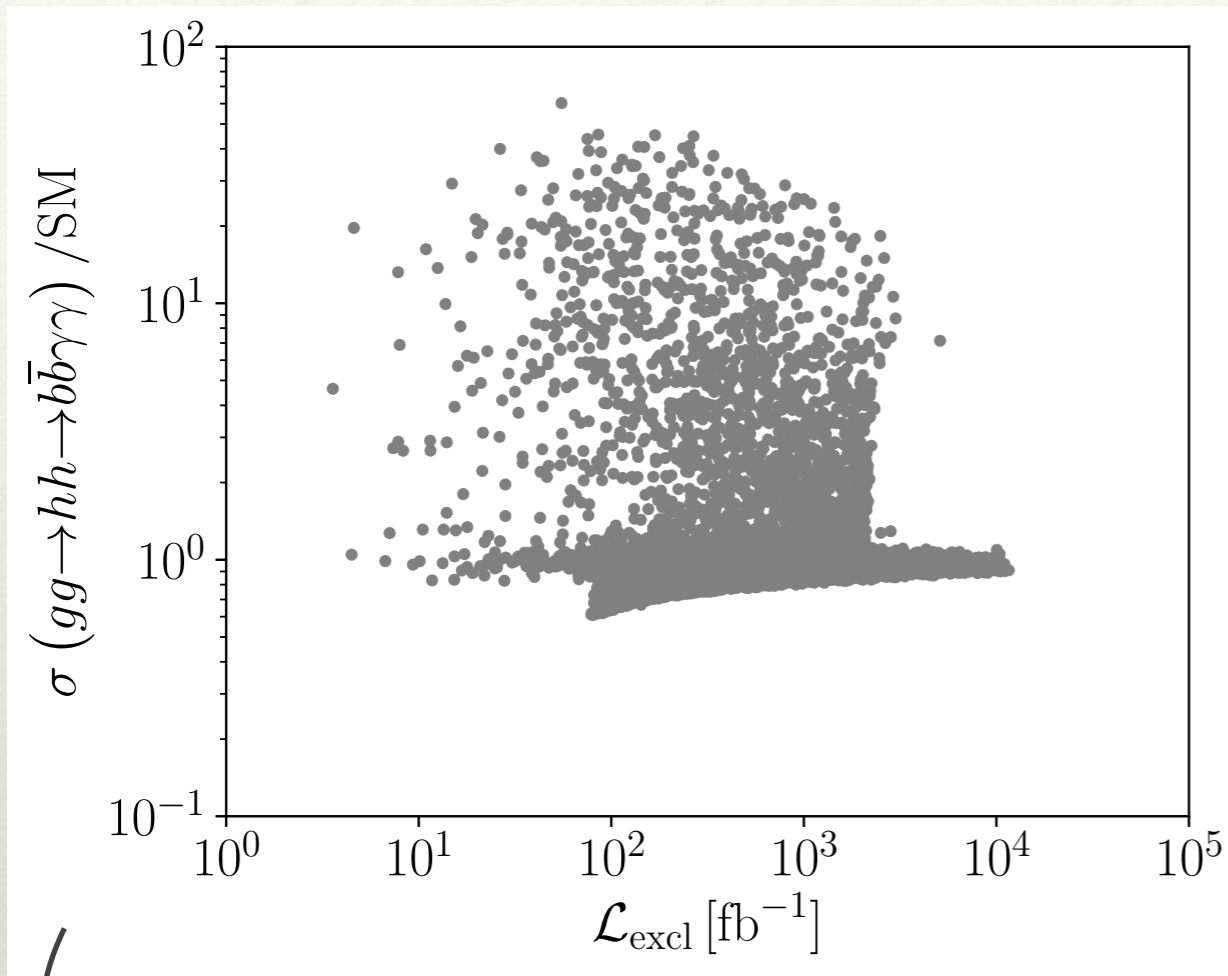


- ▶ easy to arrange EFT coefficients in a way to get spectacular rates, but can doubt physical relevance of such limits ( $\rightarrow$  matching)
- ▶ bit what about concrete Higgs sector extensions?
  - ▶ extrapolate 125 GeV signal strengths
  - ▶ extrapolate exotic Higgs searches
  - ▶ additional constraints (*electron EDMs, flavor, perturbativity, ...*)

in how far are di-Higgs final states still relevant at 3/ab?



[Basler, Dawson, CE, Mühlleitner `18]



SM-like measurements can show a plethora resonant anomalies  
 diHiggs final states important for BSM discovery

...diHiggs final states quickly lose relevance when approaching EFT limit

[Basler, Dawson, CE, Mühlleitner `18]

## above Higgs pair threshold

- (multi) resonant diHiggs production (hh, hH,...)

opportunity for diHiggs

Higgs interactions dominant

exotics with large couplings to tops

top interactions dominant

## above top pair threshold

- tt final states preferred
- analysis highly model-dependent due to dedicated S-B interference

## below top pair threshold

- compressed spectra
- single Higgs competitive except b-final states (*trigger etc...*)

opportunity for diHiggs

- ▶ *Advances have been extremely rapid*
  - ▶ good understanding of EFT
  - ▶ simulation
  - ▶ limit setting - machine learning
- ▶ *Opportunity to link the Higgs sector to new physics*
  - ▶ cure SM shortcomings (CP violation...)
  - ▶ multi-Higgs production as a chance for BSM
  - ▶ LHC probably not be enough to achieve this in full glory